



صندوق تطوير وإقراض الهيئات المحلية
Municipal Development & Lending Fund



Grant Allocation Mechanism “GAM” Implementation Manual

“Municipal Development Program -Phase 4”

Named by the World Bank: West Bank and Gaza Resilient Municipal Services Project “RMSP”

**Palestine, Ramallah
August 2023**

“The manual is a dynamic in nature can be subjected to change for cycle 2. The eligibility criteria and GAM might be changed to address a potential funding gap for cycle 2”.

CONTENTS

- I. Introduction
- II. Grant Allocation Mechanism
- III. Definition of Eligibility, Key Performance Indicators and Ranks
- IV. Assessment Procedure of Municipal Performance
- V. Definition of Basic Grants Allocation
- VI. Preliminary Allocation of MDP Component 1- Grant Funds

Tables

- Table 1: MDP4 KPIs
Table 2: Performance Graduation
Table 3: Fund allocation factors for different performance ranks

Charts

- Chart 1: MDP4 Baseline Ranking (2023 -initial results before appeals)
Chart 2: Compliance of Municipalities with MDP4 KPIs – Baseline 2023
(initial results before appeals)

ANNEXES

- Annex A: Questionnaire Form
Annex B: Scope of Work for Ranking Assessment

I. Introduction

This manual defines the processes and procedures to implement the grant allocation mechanism (GAM) for the fourth phase of the Municipal Development Programme MDP4.

The Programme objective of MDP 4 is defined as follows:

To strengthen municipal capacity to deliver accountable, sustainable, inclusive and resilient services to the municipal population in the West Bank and Gaza.

This manual defines the principles of the grant allocation mechanism intended to support the achievement of the MDP4 objective. The manual describes the agreed key performance indicators (KPIs) where the municipal performance measured the compliance with KPIs will determine the performance based grant allocation component. The manual further defines the information sources for the KPIs, the procedures of data assessment, the complaint procedures and the allocation process. The manual provides corresponding guidelines and illustrates administrative flow.

The manual comprises the following sections:

Chapter II: The overall design of the Grant Allocation Mechanism (GAM)

Chapter III: The definition of eligibility criteria, key performance indicators and ranks.

Chapter IV: The procedures for assessing municipal performance and the complaint system.

Chapter V: The definition of proxy-indicators of the needs component and data sources for their assessment.

Chapter VI: Preliminary allocation of funds based on a preliminary assessment of performance and needs indicators.

Once the municipal performance will be assessed and final results are available for cycle 1 and cycle 2, respective chapters on the final allocation of funds will be annexed to this manual.

The manual is part of the MDP 4 operational manual and subject to approval by the Development Partners (DPs).

II. Grant Allocation Mechanism

The following Grant Allocation Mechanism (GAM) concept for MDP 4 is based on the revised and updated GAM of MDP 3. The concept aims at changing contents and procedures gradually and as far as justified by challenges identified in the stakeholder assessments while preparing the concept note for MDP4, while maintaining proven features.

The MDLF and the DPs agreed that the allocation formula for MDP 4 will be as follows:

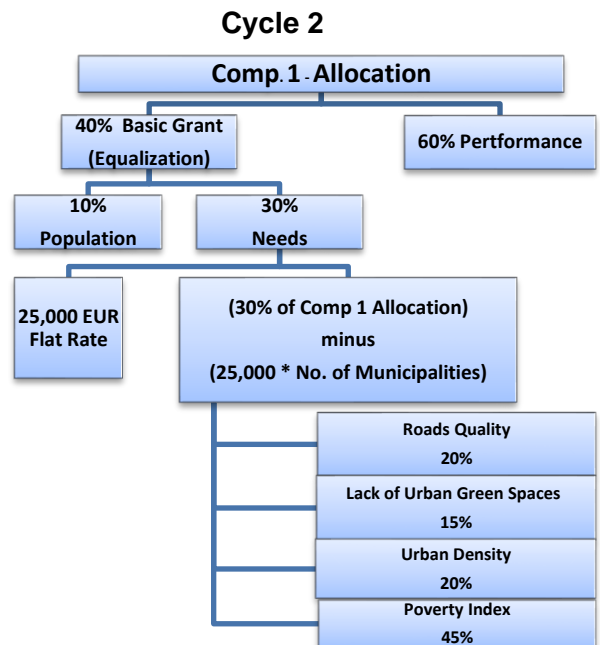
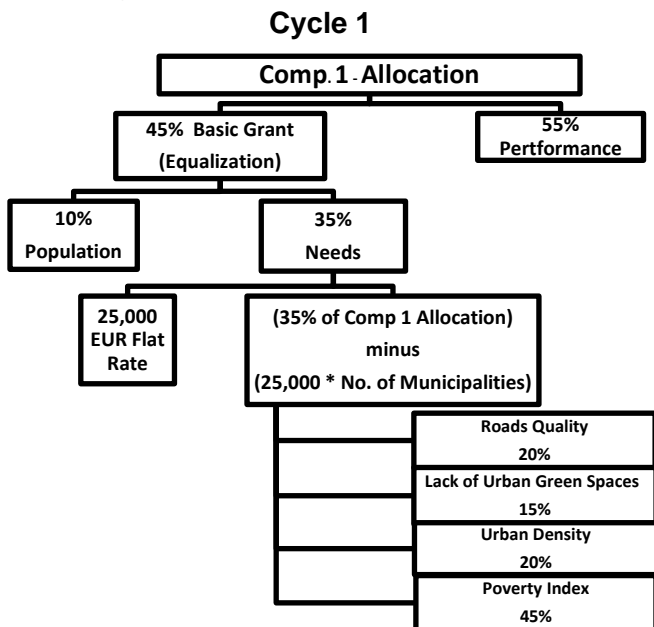
The allocated fund under component 1 will be distributed among eligible municipalities based on this criterion.

Cycle 1:

- **45% of the total component 1 financing would be allocated for the block grant (less than MDP 3 by 5%):** The block grant will be allocated based on population (10%) and needs (35%). All municipalities will receive block grants, subject to eligibility criteria (minimum conditions). Regarding the needs, it consists of a flat rate of 25.000 EUR (no change compared to MDP 3), and the remaining needs allocation will be distributed based on existing infrastructure and access to services and based on the poverty index as calculated by the PCBS).
- **55% for performance (exceeds MDP 3 by 5%):** but with modified key performance indicators (19 KPIs for MDP4 vs. 21 KPIs for MDP3) and with modification on the graduation ladder.

Cycle 2:

- **40% of the total component 1 financing would be allocated for the block grant (less than MDP 3 by 10%):** The block grant will be allocated based on population (10%) and needs (30%). All municipalities will receive block grants, subject to eligibility criteria (minimum conditions). Regarding the needs it consists of a flat rate of 25.000 EUR (no change compared to MDP 3), and the remaining needs allocation will be distributed based on existing infrastructure and access to services and the poverty index as calculated by the PCBS).
- **60% for performance (exceeds MDP 3 by 10%):** but with modified key performance indicators (19 KPIs for MDP4 vs. 21 KPIs for MDP3) and with modification on the graduation ladder.



The following are the main steps for the performance ranking and the assessment of needs proxy-indicators of the municipalities. Once the pool of resources for each allocation cycle is determined, the per capita allocation for each rank and the allocation for the needs component can be determined.

Main steps and tentative time schedule:

- Data collection for needs proxy-indicators and key performance indicators (by December 2022 for cycle 1, November 2024 for cycle 2)
- Assignment and implementation of verification missions of key performance to all municipalities and implementation of a validation process including an appeals mechanism (March -July 2023 for cycle 1, Feb - May 2025 for cycle 2)
- Identification of the performance ranking based on validated information. (August 2023 for cycle 1, May 2025 for cycle 2)
- Determine the pool of MDLF financial resources for the next fiscal year (by July 2023 for cycle 1, by April 2025 for cycle 2).
- Compute, approve and communicate the component 1 allocation to all municipalities (by August 2023 for cycle 1, by June 2025 for cycle 2).

III. Definition of Eligibility, Key Performance Indicators and Ranks

III.1 Eligibility Conditions

For MDP 4, it was agreed between MDLF and the DPs, that only municipalities fulfilling the eligibility conditions will receive the basic grant comprising (population and needs). Where the eligibility conditions will be assessed on an annual basis.

The Basic Eligibility Criteria which enable the municipality to receive at least the block grant (population and needs) can be illustrated as follows:

1- Annual Budget Approval:

- The particular municipality has submitted and approved Budget Plan for the fiscal year preceeding the year of appraisal to MoLG (budget 2023 for cycle 1), (budget 2024, budget 2025 for cycle 2); the budget has to comply with MoLG standards according to the chart of account as per the budget portal “Al-Bawwaba” comprising the general budget and the commercial budget (if the municipality has any enterprise activities).
- MoLG will inform MDLF prior to the performance appraisal which municipalities have submitted their budget plans for the fiscal years over the MDP4 duration.

2- Annual Update of Municipal Strategic Development & Investment Plan:

- The existence of a municipal development plan which has been developed and approved or updated in the last complete fiscal year according to the SDIP Manual and using the SDIP Tools.
- Tentative minimum requirements are:
 - The plan should have been developed through planning committees comprised from the local stakeholders and the municipality (*means of*

verification: list of the committees along with the meeting minutes of each meeting and the social contract signed by the stakeholders).

- Adequate public participation according to the SDIP manual; the participants of the aforementioned public meetings and workshops should include women and youth (public announcement of the SDIP process, two stakeholder workshops to identify priority issues, vision and identified interventions (programs and projects), public announcement of the SDIP. *(means of verification: documentation of the workshops and public meetings).*
 - The SDIP should contain a diagnostic report with the minimum table of content that is identified in the SDIP manual *(means of verification: the diagnostic report)*
 - The SDIP should contain the vision, priority issues, development objectives and indicators, four years' implementation plan, project profiles, monitoring and evaluation plan and a spatial plan *(means of verification: the strategic development framework)*
 - The SDIP prioritises investments under sole municipal responsibility with a total investment volume relating to the financial capacity of the municipality according to the standards for good planning practices set by the Manual.
- For updating the SDIP, the minimum requirements are as follows:
 - The update of the SDIP should have been developed through planning committees comprised from the local stakeholders and the municipality *(means of verification: list of the committees along with the meeting minutes of each meeting).*
 - The updated SDIP should have been presented in a public hearing.
 - The updated SDIP should contain evaluation of implementation progress (planned vs implemented and reasons of variation).
 - The SDIP prioritises investments under sole municipal responsibility with a total investment volume relating to the financial capacity of the municipality according to the standards for good planning practices set by the Manual.

3- Public Disclosure of annual budget: The municipal administration has disclosed the budget summary to citizens. In the second cycle, the disclosure shall be done by the readable budget format from MoLG once the MoLG endorses the format at the municipal level and makes it compulsory.

4- Municipalities are actively submitting information within the MOF Net lending portal (once the portal is operational)

III.2 Key Performance Indicators

The weight of the performance component versus the equalization component was discussed with Palestinian authorities, municipal stakeholders and development partners. A slight increase by 5% in the 1st cycle and 10% in the 2nd cycle (copared to MDP3) was agreed upon with sakeholders.

The ranking exercise of MDP 3 cycle 2 has shown, good compliance of municipalities with KPIs 21 (in general) despite the crisis conditions in Gaza which have allowed less progress and in proportion, more municipalities regressed in Gaza than in West Bank. The adjustment of the performance system therefore has taken into account the specific conditions of Gaza especially with regard to the financial performance indicators.

The consultation process has shown, that for some areas, the quality of processes should receive more attention, for instance, the social accountability indicators. Additional aspects raised in the consultation process include the adaptation to risks such as climate change, and the care and services for vulnerable groups/areas.

The performance assessment will require more systematic verification on the municipal level (e.g. incoherence of municipal budget information on Al Bawwaba platform) and the inclusion of information from the social accountability processes and from audits. The performance indicators have been slightly reduced and partly simplified. It is suggested, that after a first municipal self-assessment, a verification team of experts will encounter each municipality and verify the information with the municipality.

Table 1: MDP4 KPIs

KPIs – 1 st Cycle	Verification Protocol	Performance Areas	Rank
1. Cost Accounting Systems Set up	a) LGU is applying a costing method for setting out the needed resources for costing the major services.	Institutional Performance	A
	b) The current system provides the structure of the applied costing method (What expenses are direct and what expenses are indirect).		
	c) The current system provides necessary reports for forecasting, planning, and ratios for the last complete FY.		
	* Eligibility Condition: The Adoption of IPSAS (Accrual Accounting) and Fund accounting.		
2. IFMIS implemented	a) financial position statement generated from the system for the last FY.	Institutional Performance	A
	b) financial performance statement generated from the system for the last FY.		
	c) Cash flows statement generated from the system for the last FY.		
	d) Comparison statement between actual and planned results for the last FY.		
	* Eligibility Condition: The Adoption of IPSAS (Accrual Accounting) and Fund accounting.		
3. Green Spaces implemented	a) The municipality has expanded or rehabilitated green spaces (at least 0.1 m ² per capita in the past two years) b) Availability of public green space of > 0.5 m ² per capita in West Bank urban municipalities and > 0.3 m ² per capita in Gaza and West Bank rural municipalities. The classification of municipalities (rural and arban) is based on the PCBS data and publicatiopns as previously usede in the successor MDPs.	Services Quality	A

KPIs – 1 st Cycle	Verification Protocol	Performance Areas	Rank
4. LGU's Liquidity.	a) The calculation for this ratio is Current Ratio (Liquidity) = Current Assets/Current Liabilities.	Used to evaluate a LGU's ability to pay its short-term obligations, such as accounts payable and wages) Financial Management	A
	b) $1 < X < 2$. A current ratio of "2.00" is considered sufficient; but to be able to provide service to the public and to pay off its debts when they are due, a current ratio of "1.00" is considered a safety limit for the institution's payment capability.		
	c) financial position statement generated from the system for the last FY.		
	* Eligibility Condition: The Adoption of IPSAS (Accrual Accounting) and Fund accounting.		
5. At least 10% of the SDIP-identified priorities (in terms of # of projects) serve vulnerable groups and marginalized areas.	b) At least 10% of SDIP's planned projects serve vulnerable communities and groups including PWD's, the elderly, women and girls, and youth as well as the people living in marginalized areas within the boundaries of the municipality.	Transparency and Accountability	A
6. Electronic Services in place and functional	a) Up-to-date EMS portal information b) Evidence for functional EMS	Services Quality, Transparency, and Accountability	A
7. $10\% < X < 15\%$ of the operational expenditure <u>Paid</u> for Maintenance	a) Paid maintenance expenditure $10\% < X < 15\%$ of Paid total operational expenditure in the last complete FY	Service Sustainability	B
	b) The calculation for this ratio is: <u>Paid</u> Maintenance expenditures/ <u>Paid</u> Operating expenditures		
8. Operational Surplus achieved	a) Operational revenues exceed operational expenditures for the last FY	Financial Management	B
	b) Operational Surplus (margin) = <u>Collected</u> Operational revenues - <u>Paid</u> operational expenditures.		
9. LGU's Fiscal Autonomy	a) The calculation for this ratio is: Own Revenues /Total Revenues	Service Sustainability (A large percentage of own revenues to the total revenue can mean the LGU depends too much on this source of revenue)	B
	b) This ratio must be at least 80% (WB) or 70% (Gaza) in the last complete FY		
	Total revenues do not include grants & the equation will be calculated on the accrual basis		
10. At least two SA tools implemented annually by the municipality and the SA committee	a) Municipal budgets and resource allocation for SA tools.	Transparency and Accountability	B
	b) Reports related to implemented SA tools		
11. At least Two major SDIP projects take into account adaptation to climate change risk.	Revision of SDIP document and quantification of CC adaptation-related projects	Services Quality, Transparency, and Accountability	B
12. Minimum standards for the Grievance Redress Mechanism are met.	a) Municipalities have a clear and known procedure for categorization by types of grievances, their classification (Suggestion, Comment, Inquiry, and Complaint), their handling with time frames (at each level); and clarity on the types of process and outcomes.	Transparency and Accountability	B
	b) Reports in place regarding statistics related to the complaints with proven evidence of response.		

KPIs – 1 st Cycle	Verification Protocol	Performance Areas	Rank
13. Unqualified audit opinion from annual external audit executed according to standard ToR of MOLG and audit findings from the previous year (if any) are addressed adequately	a) Audit report satisfactory concerning items listed in the manual and ToR.	Institutional Performance	C
	b) The audit follows up on previous management letters and the municipality has addressed issues raised adequately		
14. Audit opinion disclosed to citizens and stakeholders by foreseen means	a) External Audit in the last complete FY	Transparency and Accountability	C
	b) Disclosure of audit opinion by foreseen means, such as the LGU website. <i>“This indicator refers to whether an external audit of the municipal financial statements and related financial processes has been conducted in the last completed fiscal year and the resulting audit opinion has been disclosed by the foreseen means of public disclosure”.</i>		
15. Staff Costs <40% WB <50% GZ of Operational expenditure	a) Total staff expenditure <40% (WB) or <50% (Gaza) of total operational expenditure in the last complete FY.	Financial Management: (Used to evaluate a LGU's operation efficiency. Is an appropriate amount spent on accomplishing the LGU's services)	C
	b) The calculation for this ratio is: <u>Paid</u> Salaries & Wages expense / <u>Paid</u> Operating expense.		
16. No increase in net lending	a) Revision of water and electricity arrears from MOF records.	Institutional Performance	C
	b) Review the outstanding liabilities for water and electricity from the financial position statement for the last FY.		
17. Fixed asset register in place and regularly updated representing actual values	a) Fixed asset registry set up according to manual	Institutional Performance	D
	b) Fixed asset registry has been updated annually		
18. Executed budget statement for the previous FY submitted to MoLG on time via the foreseen electronic platform.	a) An executed budget covering the complete fiscal year (January – December) available	Institutional Performance	D
	b) The previous year's budget was generated from the Ministry of Local Government budget portal.		
	c) MoLG informs MDLF		
19. Public disclosure of executed budget and executed SDIP	a) Information disclosed in line with public disclosure procedures	Transparency and Accountability	D
	b) (second cycle) Annual budget plan disclosure done in the readable budget format		

Note:

Definition of audit opinions:

Adverse opinion: the auditor determines that the financial statements of an auditee are materially misstated.

Qualified opinion: the auditor encountered one of two types of situations which do not comply with generally accepted accounting principles: one misstatement that does not affect the rest of the financial statements or the auditor could not audit one or more areas of the financial statements. However, the rest of the financial statements are fairly presented.

Unqualified opinion: the auditor concludes that the financial statements give a true and fair view in accordance with the financial reporting framework used for the preparation and presentation of the financial statements.

III.3 Ranking

The KPIs or elements of financial and service management, have been prioritized from the most basic to the most sophisticated. The Rank D includes three basic indicators. For Rank C, Rank B and finally Rank A, the indicators covering the areas of municipal performance are more and more challenging. Rank A indicators are the most challenging and reflect best municipal performance.

The graduation of municipalities on the performance ladder requires compliance with the different KPIs of each rank. In total there are 10 ranks of performance from the highest to the lowest level of performance (A++), (A+), (A), (B++), (B+), (B), (C++), (C+), (C), and (D).

It was suggested to maintain in principle the established performance graduation system under MDP3 with slight adjustment to fit with the reduction to 19 KPIs.

Table 2: Performance Graduation

D	C	B	A
3 KPIs	4 KPIs	6 KPIs	6 KPIs
Compliance of 3 KPIs	C: compliance of 2 out of 4 C+: compliance of (3) out of 4 C++: compliance of 4 out of 4 In addition to the KPIs in rank D	B: compliance of (2) out of 6 B+: compliance of (3,4) out of 6 B++: compliance of (5,6) out of 6 In addition to the KPIs in rank D & rank C	A: compliance of (2) out of 6 A+: compliance of (3,4) out of 6 A++: compliance of (5,6) out of 6 In addition to the KPIs in rank D & rank C and rank B

Regarding the incentive multipliers, it is suggested to preserve the ratio of performance fund allocation established in the previous MDP 3. The fund allocation is based on a per capita allocation with a specific multiplier for each Rank.

Table 3: Fund allocation factors for different performance ranks

Criteria	RANK	Multiplicator
Minimum criteria met / not met		0
RANK D three criteria fulfilled	D	1
RANK C two criteria fulfilled	C	2
RANK C three criteria fulfilled	C+	3
RANK C four criteria fulfilled	C++	4
RANK B two criteria fulfilled	B	5
RANK B three or four criteria fulfilled	B+	6

RANK B five or six criteria fulfilled	B++	7
RANK A two criteria fulfilled	A	8
RANK A three or four criteria fulfilled	A+	9
RANK A five or six criteria fulfilled	A++	10

Municipalities that are not complying with Rank D criteria but with the Eligibility Conditions will receive only (basic grants for population and needs) and no performance grants. Municipalities in Rank D will receive a simple per capita allocation for performance, while each higher rank will receive a per capita allocation multiplied with the respective weight factor. In Rank A++, the per capita allocation will be based on the weight factor 10. *(the multiplier may be revised for 2nd cycle to make the increase exponentially subject to approval from DPs)*

V. Assessment Procedure of Municipal Performance

An information questionnaire (see Annex A) will be sent by MDLF to each municipality for the purposes of developing a database for ranking them according to their performance. The answers to this survey will be gathered through a web application survey and then to be verified by an independent consultant team procured by MDLF. The consultant team will communicate with the municipalities to verify the supporting documents submitted by the municipalities and will conduct field visits as needed for verification purposes in accordance to the TOR cleared by DPs. On this basis, the consultant team will deliver the updated municipal ranking to MDLF. MDLF will inform all municipalities on their updated ranks and illustrate the compliance of the municipalities with the KPIs. With this information letter, MDLF will give the municipalities the opportunity to appeal.

Appeals Mechanism:

If the municipality disagrees with the assessment of the independent consultant team, the municipality may submit within ten days an appeal to the MDLF with all necessary evidence *(the appeal duration is subject to MDLF assessment)*. In case of appeals, the MDLF management will nominate an ad hoc appeals committee composed of MDLF staff. The appeal committee will assess the KPIs on which the municipality disagrees according to the stipulations of this manual and finalize the assessment within two week after the deadline of appeals. The decision of the appeals committee is submitted to the MDLF Director General for approval which will be binding.

VI Definition of the the Basic Grants

The MDP 3 allocates 30% of funds based on needs. (a flat rate of EUR 25.000 allocated to each municipality), and the remaining is allocated based on local disparities based on the PCBS survey. The equalization potential of the needs allocation is quite acceptable for small municipalities, but is rather limited for medium or larger municipalities with severe deficits.

The Local Governance Performance Assessment “LGPA” which was conducted through the World Bank has shown that remote LGUs perform significantly lower, while population density is strongly associated with performance outcomes related to services delivery.

It is suggested to maintain the eligibility criteria to be met for the equalization to ensure a minimum compliance with legal requirements. In addition, specific governance improvement support is foreseen for low performing municipalities and newly created municipalities. The municipalities with specific governance improvement support will receive immediate capacity

development during the program preparation phase. This shall allow them to meet a better governance level before investments and to have better prepared projects.

The specific conditions of municipalities in West Bank and Gaza are quite different. The suggested approach to address this challenge for a fair allocation of equalization funds is to select the equalization parameters in a manner, that the allocation is perceived as fair for both West Bank and Gaza.

Based on stakeholder discussions, it is suggested to allocate 45% for block grants in cycle 1 and 40% for cycle 2. The block grant allocation is considered as equalization grants comprising the following:

- Population (10 %) for cycle 1 keeping the same percentage for cycle 2.
- Needs (35%) for cycle 1 to be reduced to 30% for cycle 2, while preserving the flat rate (EUR 25,000) as in MDP3 for both cycles.

The parameters of the equalization component are:

- 1) **Population:** based on the inhabitant figure according to PCBS census.
Justification: an allocation proportional to population supports the larger municipalities.

Calculation mode: allocation as share of the total grant allocation according to latest population figures from PCBS.

Weight:

10% population share

Flat rate: fixed allocation for each municipality.

Justification: A fixed amount supports the smallest municipalities.

Weight: 25,000 EUR per municipality.

For the remaining equalization funds after population share and flat rate, the following repartition is suggested:

- 2) **Quality/Coverage of roads:** based on the existing length of non-surfaced non-agricultural roads

Justification: rural and poor municipalities have a higher share of unsurfaced non-agricultural roads; agricultural roads do not require surfacing;

Calculation mode: allocation as a share of the remaining equalization fund after deduction of population share and flat rate in proportion to kilometers of non-surfaced non-agricultural roads according to latest PCBS survey, with a cap per inhabitant.

Weight and thresholds:

20% share of funds and a maximum length of 5 m / inhabitant is suggested. This takes into account 97% of all unsurfaced non-agricultural roads and avoids allocation for unsurfaced roads with low user numbers¹. A weight factor of 1.5 is suggested for Gaza, because storm water drainage is much more challenging than in West Bank and increases specific construction cost.

- 3) **Lack of urban green space:** based on the gap between actual urban green spaces (parks, play grounds, sports facilities) and a surface of at least 1m² per inhabitant

¹ According to PCBS 2017 data, 2 municipalities have around 10 m of unsurfaced non-agricultural roads per inhabitant, 15 have 5 m - 7 m of unsurfaced non-agricultural roads.

Justification: in the densely populated urban environment of Palestine, a minimum of green space is required for recreation and child health.

Calculation mode: allocation as a share of the remaining equalization fund after deduction of population share and flat rate proportional to the lack of urban green space (gap to reach 1m² of per capita)

Weight and threshold:

WHO considers a green area of 5,000 – 10,000 m² in 300 m walking area of each citizen (or 2-4% of the urban area) as minimum area for healthy urban life². In the case of the most densely populated municipalities (20,000 inhabitants / km² or more³) where the need for green space is most important, this recommendation is equivalent to 1-2 m² per inhabitant. The need defined by WHO is quite higher than the KPI for green space (0.5 m² per capita in West Bank and 0.3 m² in Gaza). Therefore, the threshold of 1 m² is suggested.

15% share of funds.

4) **Urban density** based on the surface area of the urban plan ;

Justification: LGPA assessment has shown, that municipalities with lower urban population density generally have more difficulties in service provision. The approach is also supported by the association of Gaza municipalities;

Calculation mode: allocation as a share of the remaining equalization fund after deduction of population share and flat rate proportional to the urban planning area, but with a maximum area per inhabitant which corresponds to a low or very low urban density⁴.

Weight and thresholds:

20% share of funds and a maximum area of 0.25 dunum per inhabitant (low urban density) is suggested. With this thresholds, 81% of planning area in Gaza and 59% of planning area in West Bank is included. A further inclusion of the very low density urban planning areas would generate a strong bias in fund allocation towards West Bank municipalities.

5) **Poverty on municipal level:** A combination of proxy-indicators was done by the PCBS in 2019 to conclude a poverty index per locality which is quite meaningful with regard to the opportunities for own revenue generation of the different municipalities. Households with higher income can pay more for municipal services and a thriving business sector also contributes to higher municipal revenues from taxes and fees.

Justification: municipalities with a poor population and low number of businesses have a weak own revenue base and have difficulties to provide the services according to their mandate.

Calculation mode: allocation as a share of the remaining equalization fund after deduction of population share and flat rate proportional to the poverty index (Atlas Palestine).

Weight and thresholds: **45% weight** is suggested. A quite substantial weight is necessary to have a fair equalization allocation to West Bank and Gaza.

² WHO: Urban green spaces and health - a review of evidence (2016)

³ e.g. Yatta and Anata

⁴ Densely populated municipalities have less than 0.1 dunum per inhabitant or more than 10,000 inhabitants/km² (Yatta, Anata, Gaza), Low urban density of 4,000 inh./ km² corresponds to 250 m²/cap. and very low urban density of 2,000 inh./km² corresponds to 500 m²/cap.

VII Preliminary Ranking and Allocation of MDP 4 – Cycle 1 (Component 1 Grant Funds)

The preliminary empirical results analysed below are based on data available for the ranking of municipalities under MDP4 baseline ranking assessment (before appeals), and the PCBS study on municipal infrastructure of 2023.

For the simulation, it was assumed that all 159 municipalities fulfilled the basic eligibility criteria and thus they are eligible for financing.

Of those who are eligible, 147 municipalities will receive both basic grants and performance grants as they fulfilled the minimum conditions for performance ranking. However, 12 municipalities will receive only (basic grants) as they didn't fulfill the minimum KPIs for performance ranking.

Chart 1: MDP4 Baseline Ranking (2023 -initial results before appeals)
147 municipalities

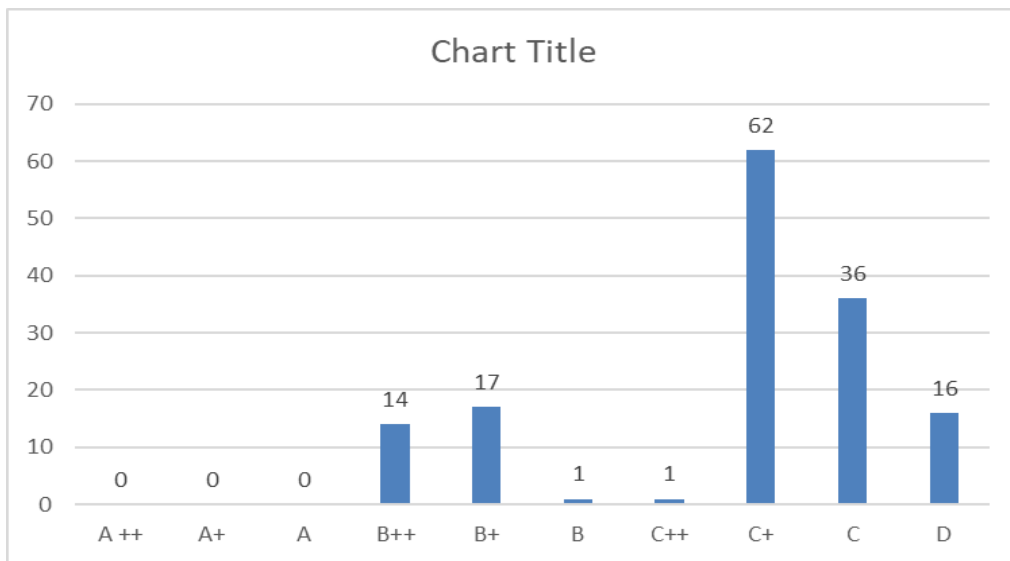
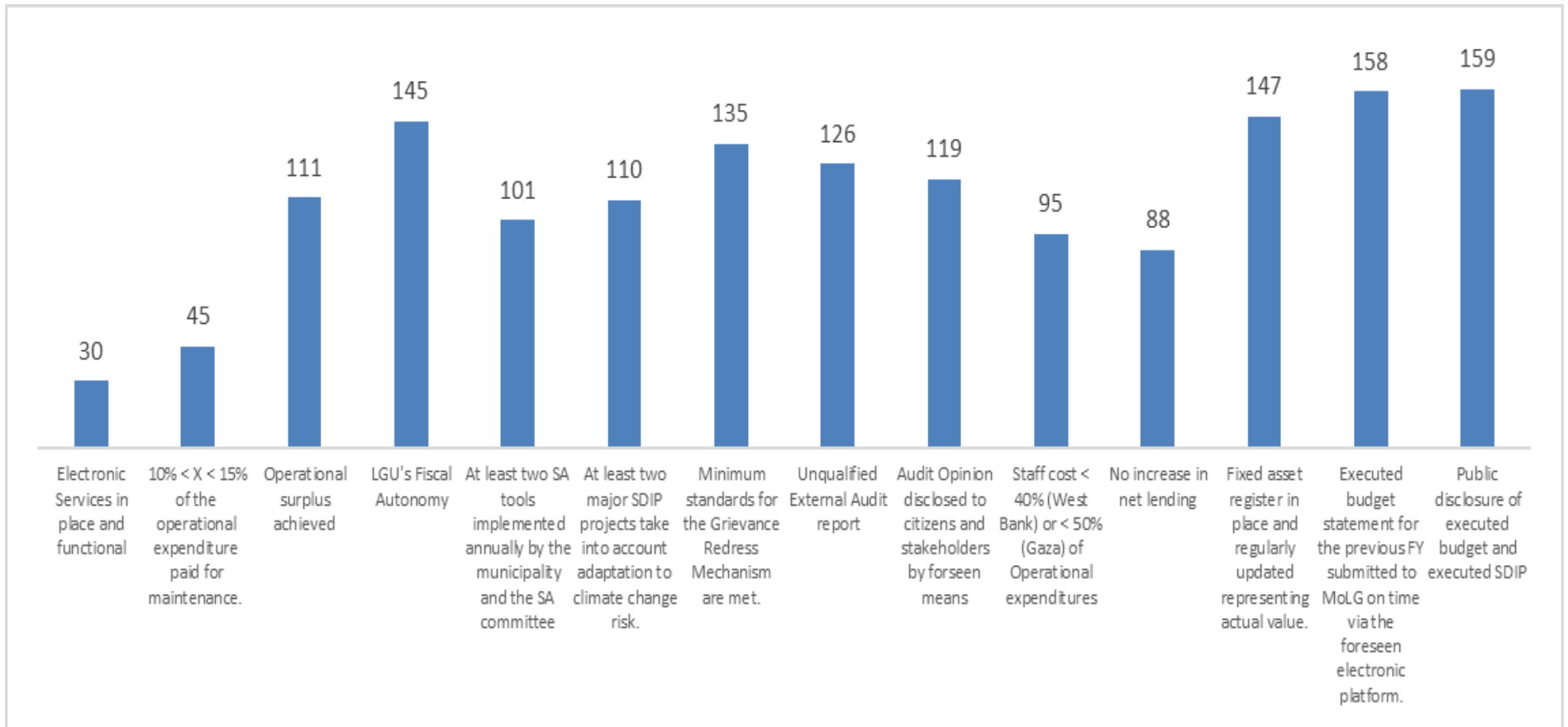


Chart 2: Compliance of Municipalities with MDP4 KPIs – Baseline 2023 (initial results before appeals)



Simulation Exercise for Municipal Allocation MDP4 – Cycle 1 (based on preliminary ranking results before appeals)

Componmet 1 Allocation = EUR 40,000,000

A: Performance	B: Population	C: Flate Rate
55%	10%	25,000
22,000,000	4,000,000	= 25,000 * 159 = 3,975,000

D: Remaining After Deducting (pop, flat rate, performance) to be distributed for needs and poverty indicators	10,025,000
---	------------

cap in km / 1000 inh.																				10,025,000		Remaining After Deducting (pop, flat rate, performance)		10,025,000									
5																				threshold		cap		20%		15%		0.25		20%		45%	
weight Gaza																				m² per capita		dunum / inh.		20%		15%		0.25		20%		45%	
1.5																				2,005,000		1		1,503,750		0.25		2,005,000		4,511,250			
km non surfaced non agricultural road	M per Capita	Corrected Considering CAP (5 m /capita)	Considering RWt for Gaza (1.5)	Final km non surfaced non agricultural road (eligible municipalities)	Relative Wt	allocation for km non surfaced non-agric. Roads (III)	Green Spaces (M2)	green space over / under threshold	missing green space in m²	missing green space in m2 (eligible municipalities)	allocation for missing green space (IV)	Planning area in dunum variable A30 of the file "main"	planning area dunum per inhabitant	area > cap value	planning area with cap	planning area with cap for eligible municipalities	allocation according to planning area with cap (V)	Poverty Percentage	Poverty % * Pop	Poverty % * Pop for eligible municipalities	RWt for poverty allocation	Poverty Allocation											
4	2	4	4	4	0.1%	1,075	0	-2,392	2392	2392	1,313	3,468	1.45	yes	598	598	1,783	19.60	46,883	46,883	0.0%	1,619	5,791										
12	4	12	18	18	0.2%	4,839	2,700	-243	243	243	133	4,160	1.41	yes	736	736	2,194	52.30	153,919	153,919	0.1%	5,316	12,482										
21	7	15	15	15	0.2%	3,910	16,000	13,091	0	0	0	4,610	1.58	yes	727	727	2,168	22.60	65,743	65,743	0.1%	2,271	8,349										
10	4	10	10	10	0.1%	2,688	4,000	1,252	0	0	0	2,701	0.98	yes	687	687	2,048	5.80	15,938	15,938	0.0%	550	5,287										
9	3	9	9	9	0.1%	2,420	4,000	504	0	0	0	2,596	0.74	yes	874	874	2,606	12.60	44,050	44,050	0.0%	1,521	6,547										
5	1	5	8	8	0.1%	2,016	2,520	-3,007	3007	3007	1,651	800	0.14	no	800	800	2,385	54.60	301,774	301,774	0.2%	10,422	16,475										
0	0	0	0	0	0.0%	0	500	-2,836	2836	2836	1,557	782	0.23	no	782	782	2,332	12.40	41,366	41,366	0.0%	1,429	5,317										
10	3	10	10	10	0.1%	2,688	2,000	-1,847	1847	1847	1,014	1,628	0.42	yes	962	962	2,868	18.70	71,939	71,939	0.1%	2,485	9,055										
50	10	26	39	39	0.5%	10,360	0	-5,138	5,138	5138	2,821	9,642	1.88	yes	1,285	1,285	3,830	48.40	248,679	248,679	0.2%	8,589	25,599										

Performance Allocation - (Per Capita Per Rank)

n° of municipalities	Rank	pop/rank	Incentive Factor	Pop * Incentive Factor	Increase per step	% pop	Relative Weigl	Allocation/Rank	Euro/cap
0	A++	0	10	0	#DIV/0!	0%	0%	0	#DIV/0!
0	A+	0	9	0	#DIV/0!	0.0%	0%	0	#DIV/0!
0	A	0	8	0	#DIV/0!	0%	0%	0	#DIV/0!
14	B++	173,025	7	1,211,175	1.86	4%	10%	2,252,767	13.02
17	B+	166,603	6	999,618	1.86	4%	8%	1,859,274	11.16
1	B	4,115	5	20,575	1.86	0%	0%	38,269	9.30
1	C++	3,847	4	15,388	1.86	0%	0%	28,621	7.44
62	C+	2,275,046	3	6,825,138	5.58	55%	58%	12,694,653	5.58
36	C	1,302,073	2	2,604,146	0.00	31%	22%	4,843,672	0.00
16	D	152,014	1	152,014		3.6%	1%	282,744	0.00
15	E	96,448	0	0		2%	0%	0	0.00
		4,173,171		11,828,054	#DIV/0!	1	0	1	22,000,000

Performance Allocation Per Municipality

No	Mun. Name	Governorate	0 not eligible, 1 eligible for financing	Population 2022	Rank Simulation on 19 KPIs (2023)	Allocation Factors										Population in different ranks										55% 22,000,000							
						0	1	2	3	4	5	6	7	8	9	10	0	1	2	3	4	5	6	7	8	9	10	Performance allocation per capita	Performance allocation (Euros)				
						D	C	C+	C++	B	B+	B++	A	A+	A++	D	C	C+	C++	B	B+	B++	A	A+	A++								
1	Al Tayybeh	Ramallah & Albireh	1	2,392	B++	FAL SE	FAL SE	FAL SE	FAL SE	FAL SE	FAL SE	FAL SE	1	FAL SE	FAL SE	FAL SE	0	0	0	0	0	0	0	0	0	0	2,392	0	0	0	13.02	31,144	
2	Al Masdar - Gaza	Deir Albalah	1	2,943	0	1	FAL SE	FAL SE	FAL SE	FAL SE	FAL SE	FAL SE	FAL SE	FAL SE	FAL SE	FAL SE	2,943	0	0	0	0	0	0	0	0	0	0	0	0	0	0	0.00	0
3	Al Newe'e meh	Jericho	1	2,909	B+	FAL SE	FAL SE	FAL SE	FAL SE	FAL SE	FAL SE	1	FAL SE	FAL SE	FAL SE	FAL SE	0	0	0	0	0	0	2,909	0	0	0	0	0	0	0	11.16	32,464	
4	Atara	Ramallah & Albireh	1	2,748	C+	FAL SE	FAL SE	FAL SE	1	FAL SE	FAL SE	FAL SE	FAL SE	FAL SE	FAL SE	FAL SE	0	0	0	2,748	0	0	0	0	0	0	0	0	0	0	5.58	15,334	
5	Sabastya	Nablus	1	3,496	C+	FAL SE	FAL SE	FAL SE	1	FAL SE	FAL SE	FAL SE	FAL SE	FAL SE	FAL SE	FAL SE	0	0	0	3,496	0	0	0	0	0	0	0	0	0	0	5.58	19,508	
6	Um Al Naser - Gaza	North Gaza	1	5,527	D	FAL SE	1	FAL SE	FAL SE	FAL SE	FAL SE	FAL SE	FAL SE	FAL SE	FAL SE	FAL SE	0	5,527	0	0	0	0	0	0	0	0	0	0	0	0	1.86	10,280	
7	Zeita	Tulkarm	1	3,336	B++	FAL SE	FAL SE	FAL SE	FAL SE	FAL SE	FAL SE	1	FAL SE	FAL SE	FAL SE	FAL SE	0	0	0	0	0	0	0	0	0	3,336	0	0	0	13.02	43,434		
8	Jayyus	Qalqilia	1	3,847	C++	FAL SE	FAL SE	FAL SE	FAL SE	1	FAL SE	FAL SE	FAL SE	FAL SE	FAL SE	FAL SE	0	0	0	0	3,847	0	0	0	0	0	0	0	0	0	7.44	28,621	
9	Wadi Gaza	Gaza	1	5,138	C	FAL SE	FAL SE	1	FAL SE	FAL SE	FAL SE	FAL SE	FAL SE	FAL SE	FAL SE	FAL SE	0	0	5,138	0	0	0	0	0	0	0	0	0	0	0	3.72	19,113	
10	Al Zahra - Gaza	Gaza	1	5,981	C+	FAL SE	FAL SE	FAL SE	1	FAL SE	FAL SE	FAL SE	FAL SE	FAL SE	FAL SE	FAL SE	0	0	0	5,981	0	0	0	0	0	0	0	0	0	0	5.58	33,374	
11	Abwein	Ramallah & Albireh	1	3,855	D	FAL SE	1	FAL SE	FAL SE	FAL SE	FAL SE	FAL SE	FAL SE	FAL SE	FAL SE	FAL SE	0	3,855	0	0	0	0	0	0	0	0	0	0	0	0	1.86	7,170	
12	Deir Istia	Salfit	1	4,115	B	FAL SE	FAL SE	FAL SE	FAL SE	1	FAL SE	FAL SE	FAL SE	FAL SE	FAL SE	FAL SE	0	0	0	0	0	4,115	0	0	0	0	0	0	0	9.30	38,269		
13	Deir Ballut	Salfit	1	4,312	C+	FAL SE	FAL SE	FAL SE	1	FAL SE	FAL SE	FAL SE	FAL SE	FAL SE	FAL SE	FAL SE	0	0	0	4,312	0	0	0	0	0	0	0	0	0	0	5.58	24,061	
14	Bruqin	Salfit	1	4,506	C+	FAL SE	FAL SE	FAL SE	1	FAL SE	FAL SE	FAL SE	FAL SE	FAL SE	FAL SE	FAL SE	0	0	0	4,506	0	0	0	0	0	0	0	0	0	0	5.58	25,143	
15	Kefel Hares	Salfit	1	4,547	B+	FAL SE	FAL SE	FAL SE	FAL SE	FAL SE	FAL SE	1	FAL SE	FAL SE	FAL SE	FAL SE	0	0	0	0	0	0	4,547	0	0	0	0	0	0	11.16	50,744		

No	Mun. Name	Governorate	0 not eligible, 1 eligible for financing	Population 2022	Rank Simulation on 19 KPIs (2023)	Allocation Factors										Population in different ranks										55% 22,000,000					
						0	1	2	3	4	5	6	7	8	9	10	0	1	2	3	4	5	6	7	8	9	10	Performance allocation per capita	Performance allocation (Euros)		
						D	C	C+	C++	B	B+	B++	A	A+	A++	D	C	C+	C++	B	B+	B++	A	A+	A++						
16	Az Zababedah	Jenin	1	4,681	B+	FAL SE	FAL SE	FAL SE	FAL SE	FAL SE	FAL SE	1	FAL SE	FAL SE	FAL SE	FAL SE	FAL SE	0	0	0	0	0	0	0	4,681	0	0	0	0	11.16	52,240
17	Turmosayya	Ramallah & Albireh	1	2,717	C	FAL SE	FAL SE	1	FAL SE	FAL SE	FAL SE	FAL SE	FAL SE	FAL SE	FAL SE	FAL SE	FAL SE	0	0	2,717	0	0	0	0	0	0	0	0	0	3.72	10,107
18	Qarawat Bani Hassan	Salfit	1	6,138	B+	FAL SE	FAL SE	FAL SE	FAL SE	FAL SE	FAL SE	1	FAL SE	FAL SE	FAL SE	FAL SE	FAL SE	0	0	0	0	0	0	6,138	0	0	0	0	11.16	68,500	
19	Beit Sureik	Jerusalem	1	4,453	C+	FAL SE	FAL SE	FAL SE	1	FAL SE	FAL SE	FAL SE	FAL SE	FAL SE	FAL SE	FAL SE	FAL SE	0	0	0	4,453	0	0	0	0	0	0	0	5.58	24,848	
20	Kufor Tholoth	Qalqilia	1	6,201	C	FAL SE	FAL SE	1	FAL SE	FAL SE	FAL SE	FAL SE	FAL SE	FAL SE	FAL SE	FAL SE	FAL SE	0	0	6,201	0	0	0	0	0	0	0	0	3.72	23,068	
21	Beit Anan	Jerusalem	1	4,657	C+	FAL SE	FAL SE	FAL SE	1	FAL SE	FAL SE	FAL SE	FAL SE	FAL SE	FAL SE	FAL SE	FAL SE	0	0	0	4,657	0	0	0	0	0	0	0	5.58	25,986	
22	Kafr Al Labad	Tulkarm	1	5,526	B++	FAL SE	FAL SE	FAL SE	FAL SE	FAL SE	FAL SE	FAL SE	1	FAL SE	FAL SE	FAL SE	FAL SE	0	0	0	0	0	0	0	5,526	0	0	0	13.02	71,948	
23	Baqa Al Sharqeya	Tulkarm	1	5,302	B+	FAL SE	FAL SE	FAL SE	FAL SE	FAL SE	FAL SE	1	FAL SE	FAL SE	FAL SE	FAL SE	FAL SE	0	0	0	0	0	0	5,302	0	0	0	0	11.16	59,170	
24	Al Oja	Jericho	1	5,672	C+	FAL SE	FAL SE	FAL SE	1	FAL SE	FAL SE	FAL SE	FAL SE	FAL SE	FAL SE	FAL SE	FAL SE	0	0	0	5,672	0	0	0	0	0	0	0	5.58	31,650	
25	Al Mazra'a Ash Sharqeya	Ramallah & Albireh	1	4,480	B++	FAL SE	FAL SE	FAL SE	FAL SE	FAL SE	FAL SE	FAL SE	1	FAL SE	FAL SE	FAL SE	FAL SE	0	0	0	0	0	0	0	4,480	0	0	0	13.02	58,329	
26	Birzeit	Ramallah & Albireh	1	6,481	B+	FAL SE	FAL SE	FAL SE	FAL SE	FAL SE	FAL SE	1	FAL SE	FAL SE	FAL SE	FAL SE	FAL SE	0	0	0	0	0	0	6,481	0	0	0	0	11.16	72,327	
27	Kufor Al Deek	Salfit	1	6,181	C+	FAL SE	FAL SE	FAL SE	1	FAL SE	FAL SE	FAL SE	FAL SE	FAL SE	FAL SE	FAL SE	FAL SE	0	0	0	6,181	0	0	0	0	0	0	0	5.58	34,490	
28	Ne'lin	Ramallah & Albireh	1	5,643	C+	FAL SE	FAL SE	FAL SE	1	FAL SE	FAL SE	FAL SE	FAL SE	FAL SE	FAL SE	FAL SE	FAL SE	0	0	0	5,643	0	0	0	0	0	0	0	5.58	31,488	
29	Wadi Al Salqa	Deir Albalah	1	7,640	C	FAL SE	FAL SE	1	FAL SE	FAL SE	FAL SE	FAL SE	FAL SE	FAL SE	FAL SE	FAL SE	FAL SE	0	0	7,640	0	0	0	0	0	0	0	0	3.72	28,421	
30	Al Zawyeh	Salfit	1	6,717	C+	FAL SE	FAL SE	FAL SE	1	FAL SE	FAL SE	FAL SE	FAL SE	FAL SE	FAL SE	FAL SE	FAL SE	0	0	0	6,717	0	0	0	0	0	0	0	5.58	37,481	

No	Mun. Name	Governorate	0 not eligible, 1 eligible for financing	Population 2022	Rank Simulation on 19 KPIs (2023)	Allocation Factors										Population in different ranks										55% 22,000,000							
						0	1	2	3	4	5	6	7	8	9	10	0	1	2	3	4	5	6	7	8	9	10	Performance allocation per capita	Performance allocation (Euros)				
							D	C	C+	C++	B	B+	B++	A	A+	A++		D	C	C+	C++	B	B+	B++	A	A+	A++						
31	Bir Nabala	Jerusalem	1	6,642	0	1	FAL SE	FAL SE	FAL SE	FAL SE	FAL SE	FAL SE	FAL SE	FAL SE	FAL SE	FAL SE	6,642	0	0	0	0	0	0	0	0	0	0	0	0	0	0	0.00	0
32	Beit Leed	Tulkarm	1	6,075	D	FAL SE	1	FAL SE	FAL SE	FAL SE	FAL SE	FAL SE	FAL SE	FAL SE	FAL SE	FAL SE	0	6,075	0	0	0	0	0	0	0	0	0	0	0	0	1.86	11,299	
33	Sinjel	Ramallah & Albireh	1	6,331	B++	FAL SE	FAL SE	FAL SE	FAL SE	FAL SE	FAL SE	1	FAL SE	FAL SE	FAL SE	0	0	0	0	0	0	0	0	6,331	0	0	0	0	0	0	13.02	82,429	
34	Deir Debwan	Ramallah & Albireh	1	4,597	C	FAL SE	FAL SE	1	FAL SE	FAL SE	FAL SE	FAL SE	FAL SE	FAL SE	FAL SE	0	0	4,597	0	0	0	0	0	0	0	0	0	0	0	0	3.72	17,101	
35	Janata	Bethlehem	1	8,090	C+	FAL SE	FAL SE	FAL SE	1	FAL SE	FAL SE	FAL SE	FAL SE	FAL SE	FAL SE	0	0	0	8,090	0	0	0	0	0	0	0	0	0	0	0	5.58	45,142	
36	West Bani Zeid	Ramallah & Albireh	1	6,646	C+	FAL SE	FAL SE	FAL SE	1	FAL SE	FAL SE	FAL SE	FAL SE	FAL SE	FAL SE	0	0	0	6,646	0	0	0	0	0	0	0	0	0	0	0	5.58	37,084	
37	Al Fokhari	Khan Younis	1	7,406	C	FAL SE	FAL SE	1	FAL SE	FAL SE	FAL SE	FAL SE	FAL SE	FAL SE	FAL SE	0	0	7,406	0	0	0	0	0	0	0	0	0	0	0	0	3.72	27,550	
38	Howwara	Nablus	1	7,263	D	FAL SE	1	FAL SE	FAL SE	FAL SE	FAL SE	FAL SE	FAL SE	FAL SE	FAL SE	0	7,263	0	0	0	0	0	0	0	0	0	0	0	0	0	1.86	13,509	
39	Borqin	Jenin	1	7,828	B++	FAL SE	FAL SE	FAL SE	FAL SE	FAL SE	FAL SE	1	FAL SE	FAL SE	FAL SE	0	0	0	0	0	0	0	0	7,828	0	0	0	0	0	0	13.02	101,920	
40	Seelet Ad Daher	Jenin	1	8,135	C	FAL SE	FAL SE	1	FAL SE	FAL SE	FAL SE	FAL SE	FAL SE	FAL SE	FAL SE	0	0	8,135	0	0	0	0	0	0	0	0	0	0	0	0	3.72	30,262	
41	As Sawahreh Ash Sharqiyya	Jerusalem	1	6,863	C	FAL SE	FAL SE	1	FAL SE	FAL SE	FAL SE	FAL SE	FAL SE	FAL SE	FAL SE	0	0	6,863	0	0	0	0	0	0	0	0	0	0	0	0	3.72	25,530	
42	Hableh	Qalqilia	1	8,262	B++	FAL SE	FAL SE	FAL SE	FAL SE	FAL SE	FAL SE	1	FAL SE	FAL SE	FAL SE	0	0	0	0	0	0	0	0	8,262	0	0	0	0	0	0	13.02	107,570	
43	Abasan Al Jadeeda	Khan Younis	1	10,679	C+	FAL SE	FAL SE	FAL SE	1	FAL SE	FAL SE	FAL SE	FAL SE	FAL SE	FAL SE	0	0	0	10,679	0	0	0	0	0	0	0	0	0	0	0	5.58	59,588	
44	Silwad	Ramallah & Albireh	1	7,496	B+	FAL SE	FAL SE	FAL SE	FAL SE	FAL SE	FAL SE	1	FAL SE	FAL SE	FAL SE	0	0	0	0	0	0	0	7,496	0	0	0	0	0	0	11.16	83,655		
45	Allar	Tulkarm	1	8,080	0	1	FAL SE	FAL SE	FAL SE	FAL SE	FAL SE	FAL SE	FAL SE	FAL SE	FAL SE	8,080	0	0	0	0	0	0	0	0	0	0	0	0	0	0	0.00	0	

No	Mun. Name	Governorate	0 not eligible, 1 eligible for financing	Population 2022	Rank Simulation on 19 KPIs (2023)	Allocation Factors										Population in different ranks										55% 22,000,000							
						0	1	2	3	4	5	6	7	8	9	10	0	1	2	3	4	5	6	7	8	9	10	Performance allocation per capita	Performance allocation (Euros)				
							D	C	C+	C++	B	B+	B++	A	A+	A++		D	C	C+	C++	B	B+	B++	A	A+	A++						
46	Jammaein	Nablus	1	8,111	0	1	FALSE	FALSE	FALSE	FALSE	FALSE	FALSE	FALSE	FALSE	FALSE	FALSE	8,111	0	0	0	0	0	0	0	0	0	0	0	0	0	0	0.00	0
47	Za'tara	Bethlehem	1	10,928	D	FALSE	1	FALSE	FALSE	FALSE	FALSE	FALSE	FALSE	FALSE	FALSE	FALSE	0	10,928	0	0	0	0	0	0	0	0	0	0	0	0	1.86	20,326	
48	Al Naser	Rafah	1	10,281	C	FALSE	FALSE	1	FALSE	FALSE	FALSE	FALSE	FALSE	FALSE	FALSE	FALSE	0	0	10,281	0	0	0	0	0	0	0	0	0	0	0	3.72	38,245	
49	Qatanna	Jerusalem	1	7,723	C+	FALSE	FALSE	FALSE	1	FALSE	FALSE	FALSE	FALSE	FALSE	FALSE	FALSE	0	0	0	7,723	0	0	0	0	0	0	0	0	0	0	5.58	43,094	
50	Al Moghraqa	Gaza	1	12,838	D	FALSE	1	FALSE	FALSE	FALSE	FALSE	FALSE	FALSE	FALSE	FALSE	FALSE	0	12,838	0	0	0	0	0	0	0	0	0	0	0	1.86	23,878		
51	Aqqaba	Tubas	1	9,106	C+	FALSE	FALSE	FALSE	1	FALSE	FALSE	FALSE	FALSE	FALSE	FALSE	FALSE	0	0	0	9,106	0	0	0	0	0	0	0	0	0	5.58	50,811		
52	Bal'aa	Tulkarm	1	8,477	C	FALSE	FALSE	1	FALSE	FALSE	FALSE	FALSE	FALSE	FALSE	FALSE	FALSE	0	0	8,477	0	0	0	0	0	0	0	0	0	0	3.72	31,534		
53	Kharas	Hebron	1	10,308	C+	FALSE	FALSE	FALSE	1	FALSE	FALSE	FALSE	FALSE	FALSE	FALSE	FALSE	0	0	0	10,308	0	0	0	0	0	0	0	0	0	5.58	57,518		
54	Bedu	Jerusalem	1	9,106	C+	FALSE	FALSE	FALSE	1	FALSE	FALSE	FALSE	FALSE	FALSE	FALSE	FALSE	0	0	0	9,106	0	0	0	0	0	0	0	0	0	5.58	50,811		
55	Meithalun	Jenin	1	9,140	C+	FALSE	FALSE	FALSE	1	FALSE	FALSE	FALSE	FALSE	FALSE	FALSE	FALSE	0	0	0	9,140	0	0	0	0	0	0	0	0	0	5.58	51,001		
56	Qabalan	Nablus	1	8,939	C+	FALSE	FALSE	FALSE	1	FALSE	FALSE	FALSE	FALSE	FALSE	FALSE	FALSE	0	0	0	8,939	0	0	0	0	0	0	0	0	0	5.58	49,879		
57	Anabta	Tulkarm	1	8,753	D	FALSE	1	FALSE	FALSE	FALSE	FALSE	FALSE	FALSE	FALSE	FALSE	FALSE	0	8,753	0	0	0	0	0	0	0	0	0	0	1.86	16,280			
58	Kufor Ra'ie	Jenin	1	9,305	C+	FALSE	FALSE	FALSE	1	FALSE	FALSE	FALSE	FALSE	FALSE	FALSE	FALSE	0	0	0	9,305	0	0	0	0	0	0	0	0	0	5.58	51,921		
59	Aseera Ash Shamaliyya	Nablus	1	9,613	B++	FALSE	FALSE	FALSE	FALSE	FALSE	FALSE	FALSE	FALSE	1	FALSE	FALSE	0	0	0	0	0	0	0	9,613	0	0	0	13.02	125,160				
60	Beit Liqia	Ramallah & Albireh	1	10,259	C+	FALSE	FALSE	FALSE	1	FALSE	FALSE	FALSE	FALSE	FALSE	FALSE	FALSE	0	0	0	10,259	0	0	0	0	0	0	0	0	5.58	57,245			

No	Mun. Name	Governorate	0 not eligible, 1 eligible for financing	Population 2022	Rank Simulation on 19 KPIs (2023)	Allocation Factors										Population in different ranks										55% 22,000,000				
						0	1	2	3	4	5	6	7	8	9	10	0	1	2	3	4	5	6	7	8	9	10	Performance allocation per capita	Performance allocation (Euros)	
						D	C	C+	C++	B	B+	B++	A	A+	A++	D	C	C+	C++	B	B+	B++	A	A+	A++					
61	Azzun	Qalqilia	1	10,538	B++	FAL SE	FAL SE	FAL SE	FAL SE	FAL SE	FAL SE	FAL SE	1	FAL SE	FAL SE	FAL SE	0	0	0	0	0	0	0	10,538	0	0	0	13.02	137,204	
62	Bedia	Salfit	1	11,636	C+	FAL SE	FAL SE	FAL SE	1	FAL SE	FAL SE	FAL SE	FAL SE	FAL SE	FAL SE	FAL SE	0	0	0	11,636	0	0	0	0	0	0	0	0	5.58	64,928
63	Beit Awwa	Hebron	1	11,771	C	FAL SE	FAL SE	1	FAL SE	FAL SE	FAL SE	FAL SE	FAL SE	FAL SE	FAL SE	FAL SE	0	0	11,771	0	0	0	0	0	0	0	0	0	3.72	43,788
64	Aqraba	Nablus	1	11,051	B+	FAL SE	FAL SE	FAL SE	FAL SE	FAL SE	FAL SE	1	FAL SE	FAL SE	FAL SE	FAL SE	0	0	0	0	0	0	11,051	0	0	0	0	11.16	123,328	
65	Deir Al Ghosoun	Tulkarm	1	10,939	C	FAL SE	FAL SE	1	FAL SE	FAL SE	FAL SE	FAL SE	FAL SE	FAL SE	FAL SE	FAL SE	0	0	10,939	0	0	0	0	0	0	0	0	0	3.72	40,693
66	Qaffin	Tulkarm	1	11,949	B+	FAL SE	FAL SE	FAL SE	FAL SE	FAL SE	FAL SE	1	FAL SE	FAL SE	FAL SE	FAL SE	0	0	0	0	0	0	11,949	0	0	0	0	11.16	133,350	
67	Jaba'a	Jenin	1	11,439	C+	FAL SE	FAL SE	FAL SE	1	FAL SE	FAL SE	FAL SE	FAL SE	FAL SE	FAL SE	FAL SE	0	0	0	11,439	0	0	0	0	0	0	0	0	5.58	63,829
68	Salfit	Salfit	1	12,452	C+	FAL SE	FAL SE	FAL SE	1	FAL SE	FAL SE	FAL SE	FAL SE	FAL SE	FAL SE	FAL SE	0	0	0	12,452	0	0	0	0	0	0	0	0	5.58	69,482
69	Ash Shoyukh	Hebron	1	13,593	B+	FAL SE	FAL SE	FAL SE	FAL SE	FAL SE	FAL SE	1	FAL SE	FAL SE	FAL SE	FAL SE	0	0	0	0	0	0	13,593	0	0	0	0	11.16	151,697	
70	Taqu'a	Bethlehem	1	12,320	C+	FAL SE	FAL SE	FAL SE	1	FAL SE	FAL SE	FAL SE	FAL SE	FAL SE	FAL SE	FAL SE	0	0	0	12,320	0	0	0	0	0	0	0	0	5.58	68,745
71	Atteel	Tulkarm	1	11,235	B++	FAL SE	FAL SE	FAL SE	FAL SE	FAL SE	FAL SE	FAL SE	1	FAL SE	FAL SE	FAL SE	0	0	0	0	0	0	11,235	0	0	0	13.02	146,279		
72	Beta	Nablus	1	12,742	C+	FAL SE	FAL SE	FAL SE	1	FAL SE	FAL SE	FAL SE	FAL SE	FAL SE	FAL SE	FAL SE	0	0	0	12,742	0	0	0	0	0	0	0	5.58	71,100	
73	Khaza'aa	Khan Yunis	1	13,091	C+	FAL SE	FAL SE	FAL SE	1	FAL SE	FAL SE	FAL SE	FAL SE	FAL SE	FAL SE	FAL SE	0	0	0	13,091	0	0	0	0	0	0	0	5.58	73,047	
74	Seelet Al Hartheyya	Jenin	1	12,577	B+	FAL SE	FAL SE	FAL SE	FAL SE	FAL SE	FAL SE	1	FAL SE	FAL SE	FAL SE	FAL SE	0	0	0	0	0	0	12,577	0	0	0	11.16	140,358		
75	Ad Doha	Bethlehem	1	14,062	C+	FAL SE	FAL SE	FAL SE	1	FAL SE	FAL SE	FAL SE	FAL SE	FAL SE	FAL SE	FAL SE	0	0	0	14,062	0	0	0	0	0	0	0	5.58	78,465	
76	Al Khader	Bethlehem	1	13,189	B++	FAL SE	FAL SE	FAL SE	FAL SE	FAL SE	FAL SE	FAL SE	1	FAL SE	FAL SE	FAL SE	0	0	0	0	0	0	13,189	0	0	0	13.02	171,719		

No	Mun. Name	Governorate	0 not eligible, 1 eligible for financing	Population 2022	Rank Simulation on 19 KPIs (2023)	Allocation Factors										Population in different ranks										55% 22,000,000															
						0	1	2	3	4	5	6	7	8	9	10	0	1	2	3	4	5	6	7	8	9	10	Performance allocation per capita	Performance allocation (Euros)												
							D	C	C+	C++	B	B+	B++	A	A+	A++		D	C	C+	C++	B	B+	B++	A	A+	A++														
77	Arraba	Jenin	1	13,040	C	FAL SE	FAL SE	1	FAL SE	FAL SE	FAL SE	FAL SE	FAL SE	FAL SE	FAL SE	FAL SE	FAL SE	FAL SE	FAL SE	FAL SE	FAL SE	FAL SE	FAL SE	0	0	13,040	0	0	0	0	0	0	0	0	0	0	0	0	0	3.72	48,508
78	Beit Foreek	Nablus	1	14,700	C+	FAL SE	FAL SE	FAL SE	1	FAL SE	FAL SE	FAL SE	FAL SE	FAL SE	FAL SE	FAL SE	FAL SE	FAL SE	FAL SE	FAL SE	FAL SE	FAL SE	FAL SE	0	0	0	14,700	0	0	0	0	0	0	0	0	0	0	0	5.58	82,025	
79	Taffuh	Hebron	1	17,820	B++	FAL SE	FAL SE	FAL SE	FAL SE	FAL SE	FAL SE	FAL SE	1	FAL SE	FAL SE	FAL SE	FAL SE	FAL SE	FAL SE	FAL SE	FAL SE	FAL SE	FAL SE	0	0	0	0	0	0	17,820	0	0	0	0	0	0	0	13.02	232,014		
80	Al Shokeh	Rafah	1	18,819	C	FAL SE	FAL SE	1	FAL SE	FAL SE	FAL SE	FAL SE	FAL SE	FAL SE	FAL SE	FAL SE	FAL SE	FAL SE	FAL SE	FAL SE	FAL SE	FAL SE	FAL SE	0	0	18,819	0	0	0	0	0	0	0	0	0	0	0	3.72	70,006		
81	Al Ubeidiyya	Bethlehem	1	15,946	C+	FAL SE	FAL SE	FAL SE	1	FAL SE	FAL SE	FAL SE	FAL SE	FAL SE	FAL SE	FAL SE	FAL SE	FAL SE	FAL SE	FAL SE	FAL SE	FAL SE	FAL SE	0	0	0	15,946	0	0	0	0	0	0	0	0	0	0	5.58	88,978		
82	Abu Dees	Jerusalem	1	13,553	B+	FAL SE	FAL SE	FAL SE	FAL SE	FAL SE	FAL SE	1	FAL SE	FAL SE	FAL SE	FAL SE	FAL SE	FAL SE	FAL SE	FAL SE	FAL SE	FAL SE	FAL SE	0	0	0	0	0	13,553	0	0	0	0	0	0	0	11.16	151,250			
83	Tammun	Tubas	1	14,498	B+	FAL SE	FAL SE	FAL SE	FAL SE	FAL SE	FAL SE	1	FAL SE	FAL SE	FAL SE	FAL SE	FAL SE	FAL SE	FAL SE	FAL SE	FAL SE	FAL SE	FAL SE	0	0	0	0	0	14,498	0	0	0	0	0	0	0	11.16	161,796			
84	Beit Ula	Hebron	1	16,396	C+	FAL SE	FAL SE	FAL SE	1	FAL SE	FAL SE	FAL SE	FAL SE	FAL SE	FAL SE	FAL SE	FAL SE	FAL SE	FAL SE	FAL SE	FAL SE	FAL SE	FAL SE	0	0	0	16,396	0	0	0	0	0	0	0	0	0	0	5.58	91,489		
85	Beit Fajjar	Bethlehem	1	14,909	D	FAL SE	1	FAL SE	FAL SE	FAL SE	FAL SE	FAL SE	FAL SE	FAL SE	FAL SE	FAL SE	FAL SE	FAL SE	FAL SE	FAL SE	FAL SE	FAL SE	FAL SE	0	14,909	0	0	0	0	0	0	0	0	0	0	0	0	1.86	27,731		
86	Beit Jala	Bethlehem	1	18,219	C+	FAL SE	FAL SE	FAL SE	1	FAL SE	FAL SE	FAL SE	FAL SE	FAL SE	FAL SE	FAL SE	FAL SE	FAL SE	FAL SE	FAL SE	FAL SE	FAL SE	FAL SE	0	0	0	18,219	0	0	0	0	0	0	0	0	0	0	5.58	101,661		
87	Anata	Jerusalem	1	18,717	0	1	FAL SE	FAL SE	FAL SE	FAL SE	FAL SE	FAL SE	FAL SE	FAL SE	FAL SE	FAL SE	FAL SE	FAL SE	FAL SE	FAL SE	FAL SE	FAL SE	FAL SE	18,717	0	0	0	0	0	0	0	0	0	0	0	0	0	0.00	0		
88	Beit Sahur	Bethlehem	1	14,646	C+	FAL SE	FAL SE	FAL SE	1	FAL SE	FAL SE	FAL SE	FAL SE	FAL SE	FAL SE	FAL SE	FAL SE	FAL SE	FAL SE	FAL SE	FAL SE	FAL SE	FAL SE	0	0	0	14,646	0	0	0	0	0	0	0	0	0	0	5.58	81,724		
89	Surif	Hebron	1	19,498	C	FAL SE	FAL SE	1	FAL SE	FAL SE	FAL SE	FAL SE	FAL SE	FAL SE	FAL SE	FAL SE	FAL SE	FAL SE	FAL SE	FAL SE	FAL SE	FAL SE	FAL SE	0	0	19,498	0	0	0	0	0	0	0	0	0	0	3.72	72,532			
90	Beit Ummar	Hebron	1	19,568	C	FAL SE	FAL SE	1	FAL SE	FAL SE	FAL SE	FAL SE	FAL SE	FAL SE	FAL SE	FAL SE	FAL SE	FAL SE	FAL SE	FAL SE	FAL SE	FAL SE	FAL SE	0	0	19,568	0	0	0	0	0	0	0	0	0	0	3.72	72,792			
91	Ya'bad	Jenin	1	18,495	B+	FAL SE	FAL SE	FAL SE	FAL SE	FAL SE	FAL SE	1	FAL SE	FAL SE	FAL SE	FAL SE	FAL SE	FAL SE	FAL SE	FAL SE	FAL SE	FAL SE	FAL SE	0	0	0	0	0	18,495	0	0	0	0	0	0	0	11.16	206,403			
92	Tarqumiya	Hebron	1	21,780	0	1	FAL SE	FAL SE	FAL SE	FAL SE	FAL SE	FAL SE	FAL SE	FAL SE	FAL SE	FAL SE	FAL SE	FAL SE	FAL SE	FAL SE	FAL SE	FAL SE	FAL SE	21,780	0	0	0	0	0	0	0	0	0	0	0	0	0	0.00	0		

No	Mun. Name	Governorate	0 not eligible, 1 eligible for financing	Population 2022	Rank Simulation on 19 KPIs (2023)	Allocation Factors										Population in different ranks										55% 22,000,000																	
						0	1	2	3	4	5	6	7	8	9	10	0	1	2	3	4	5	6	7	8	9	10	Performance allocation per capita	Performance allocation (Euros)														
						D	C	C+	C++	B	B+	B++	A	A+	A++	D	C	C+	C++	B	B+	B++	A	A+	A++																		
109	Bethlehem	Bethlehem	1	31,529	C+	FALSE	FALSE	FALSE	1	FALSE	FALSE	FALSE	FALSE	FALSE	FALSE	FALSE	FALSE	FALSE	FALSE	FALSE	FALSE	FALSE	FALSE	0	0	0	31,529	0	0	0	0	0	0	0	0	0	0	0	0	0	5.58	175,930	
110	Ramallah	Ramallah & Albireh	1	42,999	B++	FALSE	FALSE	FALSE	FALSE	FALSE	FALSE	FALSE	1	FALSE	FALSE	FALSE	FALSE	FALSE	FALSE	FALSE	FALSE	FALSE	0	0	0	0	0	0	0	42,999	0	0	0	0	0	0	0	0	0	0	0	13.02	559,842
111	Dura	Hebron	1	45,467	C+	FALSE	FALSE	FALSE	1	FALSE	FALSE	FALSE	FALSE	FALSE	FALSE	FALSE	FALSE	FALSE	FALSE	FALSE	FALSE	FALSE	0	0	0	0	45,467	0	0	0	0	0	0	0	0	0	0	0	0	0	5.58	253,704	
112	AdDaheriyya	Hebron	1	41,781	C	FALSE	FALSE	1	FALSE	FALSE	FALSE	FALSE	FALSE	FALSE	FALSE	FALSE	FALSE	FALSE	FALSE	FALSE	FALSE	FALSE	0	0	41,781	0	0	0	0	0	0	0	0	0	0	0	0	0	0	0	3.72	155,424	
113	Bani Sheila	Khan Younis	1	47,635	C	FALSE	FALSE	1	FALSE	FALSE	FALSE	FALSE	FALSE	FALSE	FALSE	FALSE	FALSE	FALSE	FALSE	FALSE	FALSE	FALSE	0	0	47,635	0	0	0	0	0	0	0	0	0	0	0	0	0	0	0	3.72	177,201	
114	Al Braij	Deir Albalah	1	49,507	C	FALSE	FALSE	1	FALSE	FALSE	FALSE	FALSE	FALSE	FALSE	FALSE	FALSE	FALSE	FALSE	FALSE	FALSE	FALSE	FALSE	0	0	49,507	0	0	0	0	0	0	0	0	0	0	0	0	0	0	0	3.72	184,165	
115	Beit Hanun	North Gaza	1	60,953	C	FALSE	FALSE	1	FALSE	FALSE	FALSE	FALSE	FALSE	FALSE	FALSE	FALSE	FALSE	FALSE	FALSE	FALSE	FALSE	FALSE	0	0	60,953	0	0	0	0	0	0	0	0	0	0	0	0	0	0	0	3.72	226,743	
116	Al Bireh	Ramallah & Albireh	1	50,692	C+	FALSE	FALSE	FALSE	1	FALSE	FALSE	FALSE	FALSE	FALSE	FALSE	FALSE	FALSE	FALSE	FALSE	FALSE	FALSE	FALSE	0	0	0	50,692	0	0	0	0	0	0	0	0	0	0	0	0	0	0	5.58	282,859	
117	Jenin	Jenin	1	55,180	C	FALSE	FALSE	1	FALSE	FALSE	FALSE	FALSE	FALSE	FALSE	FALSE	FALSE	FALSE	FALSE	FALSE	FALSE	FALSE	FALSE	0	0	55,180	0	0	0	0	0	0	0	0	0	0	0	0	0	0	0	3.72	205,268	
118	Qalqilia	Qalqilia	1	57,169	C+	FALSE	FALSE	FALSE	1	FALSE	FALSE	FALSE	FALSE	FALSE	FALSE	FALSE	FALSE	FALSE	FALSE	FALSE	FALSE	FALSE	0	0	0	57,169	0	0	0	0	0	0	0	0	0	0	0	0	0	0	5.58	319,000	
119	Yatta	Hebron	1	73,224	C	FALSE	FALSE	1	FALSE	FALSE	FALSE	FALSE	FALSE	FALSE	FALSE	FALSE	FALSE	FALSE	FALSE	FALSE	FALSE	FALSE	0	0	73,224	0	0	0	0	0	0	0	0	0	0	0	0	0	0	0	3.72	272,391	
120	Tulkarem	Tulkarm	1	69,937	C	FALSE	FALSE	1	FALSE	FALSE	FALSE	FALSE	FALSE	FALSE	FALSE	FALSE	FALSE	FALSE	FALSE	FALSE	FALSE	FALSE	0	0	69,937	0	0	0	0	0	0	0	0	0	0	0	0	0	0	0	3.72	260,164	
121	Deir Al Balah	Deir Albalah	1	85,478	C+	FALSE	FALSE	FALSE	1	FALSE	FALSE	FALSE	FALSE	FALSE	FALSE	FALSE	FALSE	FALSE	FALSE	FALSE	FALSE	FALSE	0	0	0	85,478	0	0	0	0	0	0	0	0	0	0	0	0	0	0	5.58	476,963	
122	Beit Lahia	North Gaza	1	104,828	C	FALSE	FALSE	1	FALSE	FALSE	FALSE	FALSE	FALSE	FALSE	FALSE	FALSE	FALSE	FALSE	FALSE	FALSE	FALSE	FALSE	0	0	104,828	0	0	0	0	0	0	0	0	0	0	0	0	0	0	0	3.72	389,957	
123	An Nseirat	Deir Albalah	1	98,523	C	FALSE	FALSE	1	FALSE	FALSE	FALSE	FALSE	FALSE	FALSE	FALSE	FALSE	FALSE	FALSE	FALSE	FALSE	FALSE	FALSE	0	0	98,523	0	0	0	0	0	0	0	0	0	0	0	0	0	0	0	3.72	366,503	
124	Rafah	Rafah	1	196,710	C+	FALSE	FALSE	FALSE	1	FALSE	FALSE	FALSE	FALSE	FALSE	FALSE	FALSE	FALSE	FALSE	FALSE	FALSE	FALSE	FALSE	0	0	0	196,710	0	0	0	0	0	0	0	0	0	0	0	0	0	0	5.58	1,097,633	

No	Mun. Name	Governorate	0 not eligible, 1 eligible for financing	Population 2022	Rank Simulation on 19 KPIs (2023)	Allocation Factors										Population in different ranks										55% 22,000,000									
						0	1	2	3	4	5	6	7	8	9	10	0	1	2	3	4	5	6	7	8	9	10	Performance allocation per capita	Performance allocation (Euros)						
							D	C	C+	C++	B	B+	B++	A	A+	A++		D	C	C+	C++	B	B+	B++	A	A+	A++								
125	Jabalia	North Gaza	1	201,522	C	FALSE	FALSE	1	FALSE	FALSE	FALSE	FALSE	FALSE	FALSE	FALSE	FALSE	0	0	201,522	0	0	0	0	0	0	0	0	0	0	0	0	0	0	3.72	749,656
126	Nablus	Nablus	1	171,150	C	FALSE	FALSE	1	FALSE	FALSE	FALSE	FALSE	FALSE	FALSE	FALSE	FALSE	0	0	171,150	0	0	0	0	0	0	0	0	0	0	0	0	0	3.72	636,673	
127	Khan Yunis	Khan Yunis	1	235,795	C+	FALSE	FALSE	FALSE	1	FALSE	FALSE	FALSE	FALSE	FALSE	FALSE	FALSE	0	0	0	235,795	0	0	0	0	0	0	0	0	0	0	0	5.58	1,315,725		
128	Hebron	Hebron	1	236,588	C+	FALSE	FALSE	FALSE	1	FALSE	FALSE	FALSE	FALSE	FALSE	FALSE	FALSE	0	0	0	236,588	0	0	0	0	0	0	0	0	0	0	0	5.58	1,320,150		
129	Gaza	Gaza	1	661,613	C+	FALSE	FALSE	FALSE	1	FALSE	FALSE	FALSE	FALSE	FALSE	FALSE	FALSE	0	0	0	661,613	0	0	0	0	0	0	0	0	0	0	0	5.58	3,691,770		
130	Al-Kafriyyat	Tulkarm	1	9,055	C+	FALSE	FALSE	FALSE	1	FALSE	FALSE	FALSE	FALSE	FALSE	FALSE	FALSE	0	0	0	9,055	0	0	0	0	0	0	0	0	0	0	0	5.58	50,526		
131	Marj Bin Amer	Jenin	1	25,971	C+	FALSE	FALSE	FALSE	1	FALSE	FALSE	FALSE	FALSE	FALSE	FALSE	FALSE	0	0	0	25,971	0	0	0	0	0	0	0	0	0	0	0	5.58	144,917		
132	Noba	Hebron	1	6,351	D	FALSE	1	FALSE	FALSE	FALSE	FALSE	FALSE	FALSE	FALSE	FALSE	FALSE	0	6,351	0	0	0	0	0	0	0	0	0	0	0	0	1.86	11,813			
133	Sorda - Abo Qash	Ramallah & Albireh	1	3,909	0	1	FALSE	FALSE	FALSE	FALSE	FALSE	FALSE	FALSE	FALSE	FALSE	FALSE	3,909	0	0	0	0	0	0	0	0	0	0	0	0	0	0.00	0			
134	Kofor Dan	Jenin	1	7,240	C+	FALSE	FALSE	FALSE	1	FALSE	FALSE	FALSE	FALSE	FALSE	FALSE	FALSE	0	0	0	7,240	0	0	0	0	0	0	0	0	0	0	0	5.58	40,399		
135	Al-Karmel	Hebron	1	10,986	D	FALSE	1	FALSE	FALSE	FALSE	FALSE	FALSE	FALSE	FALSE	FALSE	FALSE	0	10,986	0	0	0	0	0	0	0	0	0	0	0	0	1.86	20,434			
136	Qusra	Nablus	1	5,910	C	FALSE	FALSE	1	FALSE	FALSE	FALSE	FALSE	FALSE	FALSE	FALSE	FALSE	0	0	5,910	0	0	0	0	0	0	0	0	0	0	0	3.72	21,985			
137	Ajja	Jenin	1	6,769	C	FALSE	FALSE	1	FALSE	FALSE	FALSE	FALSE	FALSE	FALSE	FALSE	FALSE	0	0	6,769	0	0	0	0	0	0	0	0	0	0	0	3.72	25,180			
138	Barta'a	Jenin	1	5,264	0	1	FALSE	FALSE	FALSE	FALSE	FALSE	FALSE	FALSE	FALSE	FALSE	FALSE	5,264	0	0	0	0	0	0	0	0	0	0	0	0	0	0.00	0			
139	Kofor Aqab	Jerusalem	1	50,864	C+	FALSE	FALSE	FALSE	1	FALSE	FALSE	FALSE	FALSE	FALSE	FALSE	FALSE	0	0	0	50,864	0	0	0	0	0	0	0	0	0	0	5.58	283,819			
140	Bateer	Bethlehem	1	5,179	B+	FALSE	FALSE	FALSE	FALSE	FALSE	1	FALSE	FALSE	FALSE	FALSE	FALSE	0	0	0	0	0	0	0	0	5,179	0	0	0	0	11.16	57,797				

No	Mun. Name	Governorate	0 not eligible, 1 eligible for financing	Population 2022	Rank Simulation on 19 KPIs (2023)	Allocation Factors										Population in different ranks										55% 22,000,000				
						0	1	2	3	4	5	6	7	8	9	10	0	1	2	3	4	5	6	7	8	9	10	Performance allocation per capita	Performance allocation (Euros)	
						FAL SE	FAL SE	FAL SE	1	FAL SE	FAL SE	FAL SE	FAL SE	FAL SE	FAL SE	FAL SE	FAL SE	FAL SE	FAL SE	7,874	0	0	0	0	0	0	0			0
141	Hizma	Jerusalem	1	7,874	C+	FAL SE	FAL SE	FAL SE	1	FAL SE	FAL SE	FAL SE	FAL SE	FAL SE	FAL SE	0	0	0	7,874	0	0	0	0	0	0	0	0	0	5.58	43,937
142	Kobar	Ramallah & Albireh	1	4,763	C+	FAL SE	FAL SE	FAL SE	1	FAL SE	FAL SE	FAL SE	FAL SE	FAL SE	FAL SE	0	0	0	4,763	0	0	0	0	0	0	0	0	0	5.58	26,577
143	Nahalin	Bethlehem	1	9,639	0	1	FAL SE	FAL SE	FAL SE	FAL SE	FAL SE	FAL SE	FAL SE	FAL SE	FAL SE	9,639	0	0	0	0	0	0	0	0	0	0	0	0	0.00	0
144	Beit Haneena	Jerusalem	1	1,225	C+	FAL SE	FAL SE	FAL SE	1	FAL SE	FAL SE	FAL SE	FAL SE	FAL SE	FAL SE	0	0	0	1,225	0	0	0	0	0	0	0	0	0	5.58	6,835
145	Deir Samit	Hebron	1	9,309	D	FAL SE	1	FAL SE	FAL SE	FAL SE	FAL SE	FAL SE	FAL SE	FAL SE	FAL SE	0	9,309	0	0	0	0	0	0	0	0	0	0	0	1.86	17,315
146	Rawabi	Ramallah & Albireh	1	783	C+	FAL SE	FAL SE	FAL SE	1	FAL SE	FAL SE	FAL SE	FAL SE	FAL SE	FAL SE	0	0	0	783	0	0	0	0	0	0	0	0	0	5.58	4,369
147	Beit Kahil	Hebron	1	10,016	D	FAL SE	1	FAL SE	FAL SE	FAL SE	FAL SE	FAL SE	FAL SE	FAL SE	FAL SE	0	10,016	0	0	0	0	0	0	0	0	0	0	0	1.86	18,630
148	Al Jadera	Jerusalem	1	2,914	B+	FAL SE	FAL SE	FAL SE	FAL SE	FAL SE	1	FAL SE	FAL SE	FAL SE	FAL SE	0	0	0	0	0	0	2,914	0	0	0	0	0	11.16	32,520	
149	BeitOur - Al Tahta	Ramallah & Albireh	1	5,557	C	FAL SE	FAL SE	1	FAL SE	FAL SE	FAL SE	FAL SE	FAL SE	FAL SE	FAL SE	0	0	5,557	0	0	0	0	0	0	0	0	0	3.72	20,672	
150	Sarra	Nablus	1	3,691	0	1	FAL SE	FAL SE	FAL SE	FAL SE	FAL SE	FAL SE	FAL SE	FAL SE	FAL SE	3,691	0	0	0	0	0	0	0	0	0	0	0	0.00	0	
151	Saida	Tulkarm	1	4,093	C	FAL SE	FAL SE	1	FAL SE	FAL SE	FAL SE	FAL SE	FAL SE	FAL SE	FAL SE	0	0	4,093	0	0	0	0	0	0	0	0	0	3.72	15,226	
152	Al Jeeb	Jerusalem	1	4,571	C+	FAL SE	FAL SE	FAL SE	1	FAL SE	FAL SE	FAL SE	FAL SE	FAL SE	FAL SE	0	0	0	4,571	0	0	0	0	0	0	0	0	5.58	25,506	
153	Handza Brede'a	Bethlehem	1	8,289	D	FAL SE	1	FAL SE	FAL SE	FAL SE	FAL SE	FAL SE	FAL SE	FAL SE	FAL SE	0	8,289	0	0	0	0	0	0	0	0	0	0	1.86	15,417	
154	Al Qubayba	Jerusalem	1	4,288	D	FAL SE	1	FAL SE	FAL SE	FAL SE	FAL SE	FAL SE	FAL SE	FAL SE	FAL SE	0	4,288	0	0	0	0	0	0	0	0	0	0	1.86	7,976	
155	Al Ramaden	Hebron	1	4,681	D	FAL SE	1	FAL SE	FAL SE	FAL SE	FAL SE	FAL SE	FAL SE	FAL SE	FAL SE	0	4,681	0	0	0	0	0	0	0	0	0	0	1.86	8,707	
156	Khalet AL Maia	Hebron	1	2,424	C+	FAL SE	FAL SE	FAL SE	1	FAL SE	FAL SE	FAL SE	FAL SE	FAL SE	FAL SE	0	0	0	2,424	0	0	0	0	0	0	0	0	5.58	13,526	

No	Mun. Name	Governorate	0 not eligible, 1 eligible for financing	Population 2022	Rank Simulation on 19 KPIs (2023)	Allocation Factors										Population in different ranks										55% 22,000,000																	
						0	1	2	3	4	5	6	7	8	9	10	0	1	2	3	4	5	6	7	8	9	10	Performance allocation per capita	Performance allocation (Euros)														
							D	C	C+	C++	B	B+	B++	A	A+	A++		D	C	C+	C++	B	B+	B++	A	A+	A++																
157	Al Zaeem	Jerusalem	1	6,936	C+	FALSE	FALSE	FALSE	1	FALSE	FALSE	FALSE	FALSE	FALSE	FALSE	FALSE	FALSE	FALSE	FALSE	0	0	0	6,936	0	0	0	0	0	0	0	0	0	0	0	0	0	0	0	0	5.58	38,703		
158	Al Mazra'a Qabliya	Ramallah & Albireh	1	5,711	0	1	FALSE	FALSE	FALSE	FALSE	FALSE	FALSE	FALSE	FALSE	FALSE	FALSE	FALSE	FALSE	FALSE	5,711	0	0	0	0	0	0	0	0	0	0	0	0	0	0	0	0	0	0	0	0	0.00	0	
159	Biet Iksa	Jerusalem	1	1,961	0	1	FALSE	FALSE	FALSE	FALSE	FALSE	FALSE	FALSE	FALSE	FALSE	FALSE	FALSE	FALSE	FALSE	1,961	0	0	0	0	0	0	0	0	0	0	0	0	0	0	0	0	0	0	0	0	0	0.00	0
				4,173,171		15	16	36	62	1	1	17	14	0	0	0	96,448	152,014	1,302,073	2,275,046	3,847	4,115	166,603	173,025	0	0	0	0	0	0	0	0	0	0	0	0	0	0	0	0	22,000,000	0	

**Total Allocation Per Municipality (the simulation is based on the results before appeal)
12 municipalities will only receive block grants highlighted in red**

No	Municipality	Governorate	Gaza	Population 2022	0 not eligible, 1 eligible for financing	POP eligible	Rank Simulation 19 KPIs (2023)	Performance Allocation (EUR)	Population allocation (Euros)	Flat rate (EUR)	Needs Allocation (EUR)	MDP4-Cycle 1 Total Allocation (equalization and performance) (EUR)
1	Al Tayybeh	Ramallah & Albireh	0	2,392	1	2,392	B++	31,144	2,293	25,000	5,791	64,227
2	Al Masdar - Gaza	Deir Albalah	1	2,943	1	2,943		0	2,821	25,000	12,482	40,303
3	Al Newe'emeh	Jericho	0	2,909	1	2,909	B+	32,464	2,788	25,000	8,349	68,602
4	Atara	Ramallah & Albireh	0	2,748	1	2,748	C+	15,334	2,634	25,000	5,287	48,255
5	Sabastya	Nablus	0	3,496	1	3,496	C+	19,508	3,351	25,000	6,547	54,405
6	Um Al Naser - Gaza	North Gaza	1	5,527	1	5,527	D	10,280	5,298	25,000	16,475	57,053
7	Zeita	Tulkarm	0	3,336	1	3,336	B++	43,434	3,198	25,000	5,317	76,949
8	Jayyus	Qalqilia	0	3,847	1	3,847	C++	28,621	3,687	25,000	9,055	66,363
9	Wadi Gaza	Gaza	1	5,138	1	5,138	C	19,113	4,925	25,000	25,599	74,637
10	Al Zahra - Gaza	Gaza	1	5,981	1	5,981	C+	33,374	5,733	25,000	26,516	90,622
11	Abwein	Ramallah & Albireh	0	3,855	1	3,855	D	7,170	3,695	25,000	6,961	42,827
12	Deir Istia	Salfit	0	4,115	1	4,115	B	38,269	3,944	25,000	13,747	80,961
13	Deir Ballut	Salfit	0	4,312	1	4,312	C+	24,061	4,133	25,000	7,979	61,173
14	Bruqin	Salfit	0	4,506	1	4,506	C+	25,143	4,319	25,000	10,848	65,310
15	Kefel Hares	Salfit	0	4,547	1	4,547	B+	50,744	4,358	25,000	10,465	90,568
16	Az Zababedah	Jenin	0	4,681	1	4,681	B+	52,240	4,487	25,000	10,456	92,183
17	Turmosayya	Ramallah & Albireh	0	2,717	1	2,717	C	10,107	2,604	25,000	7,360	45,071
18	Qarawat Bani Hassan	Salfit	0	6,138	1	6,138	B+	68,500	5,883	25,000	9,741	109,124
19	Beit Sureik	Jerusalem	0	4,453	1	4,453	C+	24,848	4,268	25,000	6,473	60,588
20	Kufor Tholoth	Qalqilia	0	6,201	1	6,201	C	23,068	5,944	25,000	12,166	66,177
21	Beit Anan	Jerusalem	0	4,657	1	4,657	C+	25,986	4,464	25,000	6,566	62,016
22	Kafr Al Labad	Tulkarm	0	5,526	1	5,526	B++	71,948	5,297	25,000	7,887	110,132
23	Baqa Al Sharqeyya	Tulkarm	0	5,302	1	5,302	B+	59,170	5,082	25,000	7,611	96,863
24	Al Oja	Jericho	0	5,672	1	5,672	C+	31,650	5,437	25,000	14,032	76,118

No	Municipality	Governorate	Gaza	Population 2022	0 not eligible, 1 eligible for financing	POP eligible	Rank Simulation 19 KPIs (2023)	Performance Allocation (EUR)	Population allocation (Euros)	Flat rate (EUR)	Needs Allocation (EUR)	MDP4-Cycle 1 Total Allocation (equalization and performance) (EUR)
25	Al Mazra'a Ash Sharqeyya	Ramallah & Albireh	0	4,480	1	4,480	B++	58,329	4,294	25,000	11,435	99,058
26	Birzeit	Ramallah & Albireh	0	6,481	1	6,481	B+	72,327	6,212	25,000	16,655	120,194
27	Kufor Al Deek	Salfit	0	6,181	1	6,181	C+	34,490	5,925	25,000	8,882	74,296
28	Ne'lin	Ramallah & Albireh	0	5,643	1	5,643	C+	31,488	5,409	25,000	7,047	68,943
29	Wadi Al Salqa	Deir Albalah	1	7,640	1	7,640	C	28,421	7,323	25,000	40,208	100,951
30	Al Zawyeh	Salfit	0	6,717	1	6,717	C+	37,481	6,438	25,000	9,859	78,778
31	Bir Nabala	Jerusalem	0	6,642	1	6,642		0	6,366	25,000	2,977	34,343
32	Beit Leed	Tulkarm	0	6,075	1	6,075	D	11,299	5,823	25,000	18,695	60,817
33	Sinjel	Ramallah & Albireh	0	6,331	1	6,331	B++	82,429	6,068	25,000	8,215	121,713
34	Deir Debwan	Ramallah & Albireh	0	4,597	1	4,597	C	17,101	4,406	25,000	6,818	53,325
35	Janata	Bethlehem	0	8,090	1	8,090	C+	45,142	7,754	25,000	15,769	93,665
36	West Bani Zeid	Ramallah & Albireh	0	6,646	1	6,646	C+	37,084	6,370	25,000	16,940	85,395
37	Al Fokhari	Khan Younis	1	7,406	1	7,406	C	27,550	7,099	25,000	29,507	89,156
38	Howwara	Nablus	0	7,263	1	7,263	D	13,509	6,962	25,000	13,841	59,312
39	Borqin	Jenin	0	7,828	1	7,828	B++	101,920	7,503	25,000	12,830	147,253
40	Seelet Ad Daher	Jenin	0	8,135	1	8,135	C	30,262	7,797	25,000	13,750	76,810
41	As Sawahreh Ash Sharqiyya	Jerusalem	0	6,863	1	6,863	C	25,530	6,578	25,000	12,917	70,025
42	Hableh	Qalqilia	0	8,262	1	8,262	B++	107,570	7,919	25,000	10,368	150,857
43	Abasan Al Jadeeda	Khan Younis	1	10,679	1	10,679	C+	59,588	10,236	25,000	43,635	138,459
44	Silwad	Ramallah & Albireh	0	7,496	1	7,496	B+	83,655	7,185	25,000	16,096	131,935
45	Allar	Tulkarm	0	8,080	1	8,080		0	7,745	25,000	15,279	48,023
46	Jammaein	Nablus	0	8,111	1	8,111		0	7,774	25,000	11,828	44,602
47	Za'tara	Bethlehem	0	10,928	1	10,928	D	20,326	10,475	25,000	16,502	72,302
48	Al Naser	Rafah	1	10,281	1	10,281	C	38,245	9,854	25,000	41,154	114,253
49	Qatanna	Jerusalem	0	7,723	1	7,723	C+	43,094	7,403	25,000	17,760	93,256
50	Al Moghraqa	Gaza	1	12,838	1	12,838	D	23,878	12,305	25,000	42,111	103,295
51	Aqqaba	Tubas	0	9,106	1	9,106	C+	50,811	8,728	25,000	14,310	98,850

No	Municipality	Governorate	Gaza	Population 2022	0 not eligible, 1 eligible for financing	POP eligible	Rank Simulation 19 KPIs (2023)	Performance Allocation (EUR)	Population allocation (Euros)	Flat rate (EUR)	Needs Allocation (EUR)	MDP4-Cycle 1 Total Allocation (equalization and performance) (EUR)
52	Bal'aa	Tulkarm	0	8,477	1	8,477	C	31,534	8,125	25,000	19,893	84,552
53	Kharas	Hebron	0	10,308	1	10,308	C+	57,518	9,880	25,000	15,460	107,858
54	Bedu	Jerusalem	0	9,106	1	9,106	C+	50,811	8,728	25,000	8,739	93,279
55	Meithalun	Jenin	0	9,140	1	9,140	C+	51,001	8,761	25,000	21,091	105,852
56	Qabalan	Nablus	0	8,939	1	8,939	C+	49,879	8,568	25,000	13,396	96,843
57	Anabta	Tulkarm	0	8,753	1	8,753	D	16,280	8,390	25,000	10,777	60,448
58	Kufor Ra'ie	Jenin	0	9,305	1	9,305	C+	51,921	8,919	25,000	19,949	105,790
59	Aseera Ash Shamaliyya	Nablus	0	9,613	1	9,613	B++	125,160	9,214	25,000	27,467	186,842
60	Beit Liqia	Ramallah & Albireh	0	10,259	1	10,259	C+	57,245	9,833	25,000	13,638	105,716
61	Azzun	Qalqilia	0	10,538	1	10,538	B++	137,204	10,101	25,000	14,310	186,614
62	Bedia	Salfit	0	11,636	1	11,636	C+	64,928	11,153	25,000	19,393	120,474
63	Beit Awwa	Hebron	0	11,771	1	11,771	C	43,788	11,283	25,000	36,954	117,025
64	Aqraba	Nablus	0	11,051	1	11,051	B+	123,328	10,592	25,000	29,381	188,302
65	Deir Al Ghosoun	Tulkarm	0	10,939	1	10,939	C	40,693	10,485	25,000	20,657	96,835
66	Qaffin	Tulkarm	0	11,949	1	11,949	B+	133,350	11,453	25,000	15,600	185,403
67	Jaba'a	Jenin	0	11,439	1	11,439	C+	63,829	10,964	25,000	35,444	135,238
68	Salfit	Salfit	0	12,452	1	12,452	C+	69,482	11,935	25,000	21,609	128,026
69	Ash Shoyukh	Hebron	0	13,593	1	13,593	B+	151,697	13,029	25,000	27,891	217,616
70	Taqu'a	Bethlehem	0	12,320	1	12,320	C+	68,745	11,809	25,000	25,278	130,832
71	Atteel	Tulkarm	0	11,235	1	11,235	B++	146,279	10,769	25,000	25,443	207,491
72	Beta	Nablus	0	12,742	1	12,742	C+	71,100	12,213	25,000	23,368	131,681
73	Khaza'aa	Khan Younis	1	13,091	1	13,091	C+	73,047	12,548	25,000	38,923	149,518
74	Seelet Al Hartheyya	Jenin	0	12,577	1	12,577	B+	140,358	12,055	25,000	22,444	199,857
75	Ad Doha	Bethlehem	0	14,062	1	14,062	C+	78,465	13,478	25,000	17,212	134,156
76	A l Khader	Bethlehem	0	13,189	1	13,189	B++	171,719	12,642	25,000	17,685	227,046
77	Arraba	Jenin	0	13,040	1	13,040	C	48,508	12,499	25,000	21,170	107,177
78	Beit Forek	Nablus	0	14,700	1	14,700	C+	82,025	14,090	25,000	29,917	151,032

No	Municipality	Governorate	Gaza	Population 2022	0 not eligible, 1 eligible for financing	POP eligible	Rank Simulation 19 KPIs (2023)	Performance Allocation (EUR)	Population allocation (Euros)	Flat rate (EUR)	Needs Allocation (EUR)	MDP4-Cycle 1 Total Allocation (equalization and performance) (EUR)
79	Taffuh	Hebron	0	17,820	1	17,820	B++	232,014	17,081	25,000	36,298	310,393
80	Al Shokeh	Rafah	1	18,819	1	18,819	C	70,006	18,038	25,000	86,920	199,964
81	Al Ubeidiyya	Bethlehem	0	15,946	1	15,946	C+	88,978	15,284	25,000	27,082	156,344
82	Abu Dees	Jerusalem	0	13,553	1	13,553	B+	151,250	12,991	25,000	22,606	211,847
83	Tammun	Tubas	0	14,498	1	14,498	B+	161,796	13,896	25,000	30,503	231,196
84	Beit Ula	Hebron	0	16,396	1	16,396	C+	91,489	15,716	25,000	39,115	171,319
85	Beit Fajjar	Bethlehem	0	14,909	1	14,909	D	27,731	14,290	25,000	33,630	100,651
86	Beit Jala	Bethlehem	0	18,219	1	18,219	C+	101,661	17,463	25,000	19,028	163,152
87	Anata	Jerusalem	0	18,717	1	18,717		0	17,940	25,000	15,818	58,759
88	Beit Sahur	Bethlehem	0	14,646	1	14,646	C+	81,724	14,038	25,000	25,742	146,504
89	Surif	Hebron	0	19,498	1	19,498	C	72,532	18,689	25,000	31,628	147,849
90	Beit Ummar	Hebron	0	19,568	1	19,568	C	72,792	18,756	25,000	52,145	168,694
91	Ya'bad	Jenin	0	18,495	1	18,495	B+	206,403	17,728	25,000	27,323	276,453
92	Tarqumia	Hebron	0	21,780	1	21,780		0	20,876	25,000	38,118	83,994
93	Tubas	Tubas	0	25,240	1	25,240	B+	281,676	24,193	25,000	30,569	361,438
94	Al Yamun	Jenin	0	22,820	1	22,820	C+	127,335	21,873	25,000	45,278	219,486
95	Al Zawayda - Gaza	Deir Albalah	1	27,124	1	27,124	C	100,900	25,998	25,000	109,854	261,753
96	Al Eizariyya	Jerusalem	0	24,374	1	24,374	C	90,671	23,363	25,000	27,055	166,088
97	Se'ier	Hebron	0	27,739	1	27,739	C+	154,782	26,588	25,000	77,358	283,728
98	Jericho	Jericho	0	23,071	1	23,071	C+	128,735	22,114	25,000	57,917	233,766
99	Abasan Al Kabira	Khan Younis	1	30,769	1	30,769	C	114,460	29,492	25,000	144,801	313,753
100	Idna	Hebron	0	29,492	1	29,492	C+	164,564	28,268	25,000	54,780	272,612
101	Qabatya	Jenin	0	26,846	1	26,846	C+	149,799	25,732	25,000	29,133	229,664
102	AL Samu'e	Hebron	0	29,476	1	29,476	B++	383,774	28,253	25,000	66,788	503,815
103	Beitunia	Ramallah & Albireh	0	29,334	1	29,334	C+	163,682	28,117	25,000	34,980	251,779
104	Al Qarara	Khan Younis	1	33,341	1	33,341	C+	186,041	31,957	25,000	134,571	377,570
105	Bani N'eim	Hebron	0	27,946	1	27,946	D	51,979	26,786	25,000	56,032	159,798

No	Municipality	Governorate	Gaza	Population 2022	0 not eligible, 1 eligible for financing	POP eligible	Rank Simulation 19 KPIs (2023)	Performance Allocation (EUR)	Population allocation (Euros)	Flat rate (EUR)	Needs Allocation (EUR)	MDP4-Cycle 1 Total Allocation (equalization and performance) (EUR)
106	Al Ram	Jerusalem	0	38,340	1	38,340	C+	213,935	36,749	25,000	30,004	305,689
107	Halhul	Hebron	0	30,488	1	30,488	C	113,414	29,223	25,000	54,079	221,716
108	Al Maghazi	Deir Albalah	1	31,659	1	31,659	C	117,771	30,345	25,000	85,853	258,968
109	Bethlehem	Bethlehem	0	31,529	1	31,529	C+	175,930	30,221	25,000	47,329	278,480
110	Ramallah	Ramallah & Albireh	0	42,999	1	42,999	B++	559,842	41,215	25,000	57,874	683,931
111	Dura	Hebron	0	45,467	1	45,467	C+	253,704	43,580	25,000	78,245	400,530
112	AdDaheriyya	Hebron	0	41,781	1	41,781	C	155,424	40,047	25,000	71,987	292,459
113	Bani Sheila	Khan Younis	1	47,635	1	47,635	C	177,201	45,658	25,000	205,957	453,816
114	Al Braij	Deir Albalah	1	49,507	1	49,507	C	184,165	47,453	25,000	145,501	402,118
115	Beit Hanun	North Gaza	1	60,953	1	60,953	C	226,743	58,424	25,000	164,272	474,439
116	Al Bireh	Ramallah & Albireh	0	50,692	1	50,692	C+	282,859	48,588	25,000	45,876	402,323
117	Jenin	Jenin	0	55,180	1	55,180	C	205,268	52,890	25,000	129,893	413,051
118	Qalqilia	Qalqilia	0	57,169	1	57,169	C+	319,000	54,797	25,000	111,761	510,558
119	Yatta	Hebron	0	73,224	1	73,224	C	272,391	70,185	25,000	162,831	530,407
120	Tulkarem	Tulkarm	0	69,937	1	69,937	C	260,164	67,035	25,000	122,576	474,774
121	Deir Al Balah	Deir Albalah	1	85,478	1	85,478	C+	476,963	81,931	25,000	296,626	880,520
122	Beit Lahia	North Gaza	1	104,828	1	104,828	C	389,957	100,478	25,000	383,854	899,289
123	An Nseirat	Deir Albalah	1	98,523	1	98,523	C	366,503	94,435	25,000	238,629	724,566
124	Rafah	Rafah	1	196,710	1	196,710	C+	1,097,633	188,547	25,000	615,635	1,926,815
125	Jabalia	North Gaza	1	201,522	1	201,522	C	749,656	193,160	25,000	493,607	1,461,422
126	Nablus	Nablus	0	171,150	1	171,150	C	636,673	164,048	25,000	101,697	927,417
127	Khan Yunis	Khan Younis	1	235,795	1	235,795	C+	1,315,725	226,010	25,000	1,153,717	2,720,453
128	Hebron	Hebron	0	236,588	1	236,588	C+	1,320,150	226,770	25,000	280,778	1,852,698
129	Gaza	Gaza	1	661,613	1	661,613	C+	3,691,770	634,159	25,000	1,857,734	6,208,662
130	Al-Kafriyyat	Tulkarm	0	9,055	1	9,055	C+	50,526	8,679	25,000	14,519	98,725
131	Marj Bin Amer	Jenin	0	25,971	1	25,971	C+	144,917	24,893	25,000	46,093	240,903
132	Noba	Hebron	0	6,351	1	6,351	D	11,813	6,087	25,000	15,416	58,317

No	Municipality	Governorate	Gaza	Population 2022	0 not eligible, 1 eligible for financing	POP eligible	Rank Simulation 19 KPIs (2023)	Performance Allocation (EUR)	Population allocation (Euros)	Flat rate (EUR)	Needs Allocation (EUR)	MDP4-Cycle 1 Total Allocation (equalization and performance) (EUR)
133	Sorda - Abo Qash	Ramallah & Albireh	0	3,909	1	3,909		0	3,747	25,000	9,577	38,324
134	Kofor Dan	Jenin	0	7,240	1	7,240	C+	40,399	6,940	25,000	10,794	83,132
135	Al- Karmel	Hebron	0	10,986	1	10,986	D	20,434	10,530	25,000	40,523	96,487
136	Qusra	Nablus	0	5,910	1	5,910	C	21,985	5,665	25,000	11,138	63,787
137	Ajja	Jenin	0	6,769	1	6,769	C	25,180	6,488	25,000	10,318	66,986
138	Barta'a	Jenin	0	5,264	1	5,264		0	5,046	25,000	4,604	34,649
139	Kofor Aqab	Jerusalem	0	50,864	1	50,864	C+	283,819	48,753	25,000	40,270	397,842
140	Bateer	Bethlehem	0	5,179	1	5,179	B+	57,797	4,964	25,000	13,534	101,295
141	Hizma	Jerusalem	0	7,874	1	7,874	C+	43,937	7,547	25,000	10,190	86,674
142	Kobar	Ramallah & Albireh	0	4,763	1	4,763	C+	26,577	4,565	25,000	12,375	68,518
143	Nahalin	Bethlehem	0	9,639	1	9,639		0	9,239	25,000	13,658	47,897
144	Beit Haneena	Jerusalem	0	1,225	1	1,225	C+	6,835	1,174	25,000	1,855	34,864
145	Deir Samit	Hebron	0	9,309	1	9,309	D	17,315	8,923	25,000	22,095	73,332
146	Rawabi	Ramallah & Albireh	0	783	1	783	C+	4,369	751	25,000	2,223	32,343
147	Beit Kahil	Hebron	0	10,016	1	10,016	D	18,630	9,600	25,000	22,424	75,654
148	Al Jadera	Jerusalem	0	2,914	1	2,914	B+	32,520	2,793	25,000	4,579	64,892
149	BeitOur - Al Tahta	Ramallah & Albireh	0	5,557	1	5,557	C	20,672	5,326	25,000	12,511	63,510
150	Sarra	Nablus	0	3,691	1	3,691		0	3,538	25,000	8,274	36,811
151	Saida	Tulkarm	0	4,093	1	4,093	C	15,226	3,923	25,000	5,605	49,754
152	Al Jeeb	Jerusalem	0	4,571	1	4,571	C+	25,506	4,381	25,000	4,607	59,494
153	Handza Brede'a	Bethlehem	0	8,289	1	8,289	D	15,417	7,945	25,000	24,964	73,326
154	Al Qubayba	Jerusalem	0	4,288	1	4,288	D	7,976	4,110	25,000	6,088	43,174
155	Al Ramadeen	Hebron	0	4,681	1	4,681	D	8,707	4,487	25,000	14,039	52,232
156	Khalet AL Maia	Hebron	0	2,424	1	2,424	C+	13,526	2,323	25,000	6,396	47,245
157	Al Zaeem	Jerusalem	0	6,936	1	6,936	C+	38,703	6,648	25,000	13,143	83,493
158	Al Mazra'a Qabliya	Ramallah & Albireh	0	5,711	1	5,711		0	5,474	25,000	7,889	38,363
159	Biet Iksa	Jerusalem	0	1,961	1	1,961		0	1,880	25,000	1,731	28,610
				4,173,171		4,173,171		22,000,000	4,000,000	3,975,000	10,025,000	40,000,000

ANNEXES

Annex A: Questionnaire Form

Annex B: Scope of Work for Ranking Assessment

**ANNEX A:
QUESTIONNAIRE FORM**

إستبيان

إسم البلدية:

يتكون الإستبيان من 53 سؤالاً تتعلق بمؤشرات الأداء المعتمدة من قبل الصندوق. يرجى منكم تعبئة الإستبيان مرفقاً بالوثائق التي تدعم إجاباتكم وتسليمه للصندوق حتى تاريخ 25-1-2023

يرجى العلم بأن الوثائق المرسلة سيتم تدقيقها من قبل شركة إستشارية متخصصة بناء على معايير الحد الأدنى الواردة في الأدلة المعتمدة من قبل الصندوق وعلى تحليل الأرقام الفعلية لموازنات الاعوام 2020 و2021 و2022.

*** البيانات المالية					
الوثائق الداعمة	الإجابة			السؤال	الرقم
	لا ينطبق	لا	نعم		
إذا كانت الإجابة نعم يرجى تزويدنا بنسخة من كتاب مصادقة الموازنة لعام 2022 من قبل وزارة الحكم المحلي	<input type="checkbox"/>	<input type="checkbox"/>	<input type="checkbox"/>	هل تمت المصادقة على موازنة البلدية لعام 2022 من قبل وزارة الحكم المحلي؟	-1
إذا كانت الإجابة نعم يرجى تزويدنا بنسخة من البيانات الني تم تحميلها	<input type="checkbox"/>	<input type="checkbox"/>	<input type="checkbox"/>	هل تم تسليم/ تحميل بيانات الموازنة المنفذة إلى وزارة الحكم المحلي من خلال بوابة الموازنات وذلك للسنوات المالية:	-2
	<input type="checkbox"/>	<input type="checkbox"/>	<input type="checkbox"/>	2021 2022	
إذا كانت الإجابة نعم يرجى تزويدنا بما يثبت ذلك	<input type="checkbox"/>	<input type="checkbox"/>	<input type="checkbox"/>	هل النظام المالي المطبق في البلدية يقوم بتصنيف الحسابات حسب الموازنة والوظيفة والقطاع وفقاً لشجرة الحسابات الموحدة؟	-3
إذا كانت الإجابة نعم يرجى تزويدنا بما يثبت ذلك	<input type="checkbox"/>	<input type="checkbox"/>	<input type="checkbox"/>	هل تم فتح حسابات بنكية منفصلة لخدمة الكهرباء والمياه؟	-4
إذا كانت الإجابة نعم يرجى تزويدنا بما يثبت ذلك	<input type="checkbox"/>	<input type="checkbox"/>	<input type="checkbox"/>	هل يتم إنشاء محاسبة مالية منفصلة عن إيرادات ونفقات الميزانية التجارية/ الربحية بما يشمل التسويات البنكية؟	-5

- يرجى تعبئة البيانات المالية الفعلية للبلدية للأعوام التالية:

الرقم	المجموعة	البند	عام 2020 (بالشيك)	عام 2021 (بالشيك)	عام 2022 (بالشيك)
-6	الإيرادات التشغيلية الذاتية	رسوم الرخص والأجازات			
-7		رسوم مقابل خدمات بما يشمل النفقات الصلبة			

الرقم	المجموعة	البند	عام 2020 (بالشيكل)	عام 2021 (بالشيكل)	عام 2022 بالشيكل
-8	الإيرادات	مجموع إيرادات الموازنة العامة (موازنة الحكم المحلي)			
-9		مجموع إيرادات الموازنة التجارية			
-10	النفقات	مجموع نفقات الموازنة العامة (موازنة الحكم المحلي)			
-11		مجموع نفقات الموازنة التجارية			

الرقم	المجموعة	البند	حتى نهاية 2021 تراكمي "بالشيكل"	حتى نهاية 2022 تراكمي "بالشيكل"
-12	المديونية (الذمم المدينة)	مديونية ذمم المكلفين (الديون المستحقة للبلدية)		
-13	المديونية (الذمم الدائنة)	مديونية الكهرباء (مجموع الديون المستحقة على البلدية)		
-14		مديونية المياه (مجموع الديون المستحقة على البلدية)		

- يرجى تزويدنا بنسخة الكترونية لموازنة 2022 بحيث تتضمن: النفقات والإيرادات الفعلية لعام 2021 (حتى تاريخ 2021/12/31)
- يرجى تزويدنا بنسخة الكترونية لموازنة 2021 بحيث تتضمن: النفقات والإيرادات الفعلية لعام 2020 (حتى تاريخ 2020/12/31)

*** التدقيق الخارجي					
الرقم	السؤال	الإجابة			الوثائق الداعمة
		نعم	لا	قيود التحضير	
-15	هل يوجد لدى البلدية مدقق حسابات خارجي لعام 2021؟	<input type="checkbox"/>	<input type="checkbox"/>	<input type="checkbox"/>	إذا كانت الإجابة نعم يرجى تزويدنا بنسخة من تقرير المدقق الخارجي لعام 2021.
-16	وهل التقرير المالي المدقق أعد واعتمد وفقا للأساس المحاسبي المعتمد في البلدية؟	<input type="checkbox"/>	<input type="checkbox"/>	<input type="checkbox"/>	
-17	إذا كانت اجابة السؤال السابق بـ نعم ، هل تقرير مدقق الحسابات الخارجي (إن وجد) لعام 2021 كان غير متحفظ	<input type="checkbox"/>	<input type="checkbox"/>	<input type="checkbox"/>	إذا كانت الإجابة نعم يرجى تزويدنا بنسخة من تقرير المدقق الخارجي التام لعام 2021.
-18	إذا لم يكن التقرير (غير متحفظ) وكان هنالك ملاحظات، هل تم معالجتها خلال عام 2022؟	<input type="checkbox"/>	<input type="checkbox"/>	<input type="checkbox"/>	إذا كانت الاجابة نعم، يرجى تزويدنا بما يثبت ذلك.

*** تطبيق السياسات والإجراءات المالية

الرقم	السؤال	الإجابة			الوثائق الداعمة
		نعم	لا	قيد التحضير	
19-	هل يوجد لدى البلدية نظام مالي محوسب يتم من خلاله تسجيل كافة الحركات المالية للبلدية	<input type="checkbox"/>	<input type="checkbox"/>	<input type="checkbox"/>	إذا كانت الإجابة نعم ، يرجى تزويدنا بالتالي: <ul style="list-style-type: none"> • متى تم اعتماد النظام ؟ • مصدر البرنامج وعقد الاتفاقية مع المزود. • وفي حال لدى البلدية برامجها الذاتية ، يرجى تزويدنا بدليل ارشادي يوضح محتوى البرنامج وآلية عمله. • ميزان مراجعة صادر من النظام وشامل لنهاية 2022 ، وميزان مراجعة لكل fund على حدة لنهاية 2022
20-	هل تمتثل البلدية لمتطلبات اصدار التقارير المالية وفق دليل السياسات والاجراءات المالية المعتمد من وزارة الحكم المحلي	<input type="checkbox"/>	<input type="checkbox"/>	<input type="checkbox"/>	إذا كانت الإجابة نعم يرجى تزويدنا بقائمة المركز المالي والاداء المالي لعامي 2021 و 2022 والصادرة بموجب النظام المحوسب المطبق
21-	هل تطبيق البلدية أساس الاستحقاق الكامل	<input type="checkbox"/>	<input type="checkbox"/>	<input type="checkbox"/>	إذا كانت الإجابة نعم يرجى تزويدنا: <ul style="list-style-type: none"> • بسند اثبات تسجيل المنح العينية • سند قيد اهلاك الاصول الثابتة • سند قيد اثبات رواتب مستحقة وذلك عن عامي 2021 و 2022 والصادرة بموجب النظام المحوسب لأي شهر خلال السنتين المذكورتين
22-	هل يوجد نظام لاحتساب تكلفة خدمات البلدية (او خدمة معينة).	<input type="checkbox"/>	<input type="checkbox"/>	<input type="checkbox"/>	إذا كانت الإجابة نعم يرجى تزويدنا بهيكلية احتساب تكاليف خدمة معينة بحيث يتضح من خلالها عناصر النفقات المباشرة وغير المباشرة

**** التخطيط التنموي الإستراتيجي**

الرقم	السؤال	الوثائق الداعمة
23-	كم بلغت نسبة ما تم إنجازه من الخطة التنموية الاستراتيجية من حيث عدد المشاريع وقيمتها؟ يرجى إرفاق قائمة توضح المشاريع المنجزة من ضمن المشاريع الكلية الواردة في الخطة التنموية الاستراتيجية السابقة	عدد المشاريع المنجزة النسبة المئوية من حيث عدد المشاريع.....% قيمة المشاريع المنجزة بالدولار..... النسبة المئوية من حيث قيمة المشاريع%
24-	هل تم تخصيص مشاريع ضمن الأولويات التنموية الاستراتيجية السابقة للتكيف او الحد من مخاطر تغير المناخ؟	يرجى إرفاق ما يثبت ذلك ضمن الخطة التنموية الاستراتيجية السابقة. (الرجاء إرفاق قائمة كلية بمشاريع الخطة التنموية السابقة وتحديد مشاريع التكيف من ضمن القائمة الكلية) أمثلة: (مشاريع الطاقة المتجددة، الحصاد المائي، الأبنية الخضراء، الحدائق العامة، إدارة الفيضانات، محطات التحلية، محطات معالجة الصرف الصحي، معالجة النفايات الصلبة،... الخ)

***** تسجيل وتقييم الأصول الثابتة**

الرقم	السؤال	الإجابة		
		نعم	لا	قيد التحضير
				الوثائق الداعمة

25	هل يوجد لدى البلدية تسجيل وتقييم للأصول الثابتة؟	<input type="checkbox"/>	<input type="checkbox"/>	<input type="checkbox"/>	إذا كانت الإجابة نعم يرجى تزويدنا بالنسخة الأساسية من تسجيل وتقييم الأصول الثابتة.
26	إذا كانت الإجابة نعم، ومر عام أو أكثر على تسجيل وتقييم الأصول الثابتة للبلدية، هل تم تحديث سجل الموجودات الثابتة وتقييمها؟	<input type="checkbox"/>	<input type="checkbox"/>	<input type="checkbox"/>	إذا تم تحديث سجل الموجودات الثابتة للبلدية يرجى تزويدنا بالنسخة المحدثة لتسجيل وتقييم الأصول الثابتة لعام 2022.
*** دليل التشغيل والصيانة					
الرقم	السؤال	الإجابة			الوثائق الداعمة
		نعم	لا	قيّد التحضير	
27	هل لدى البلدية نظام محوسب لإدارة الصيانة والتشغيل لقطاعي الطرق والمباني	<input type="checkbox"/>	<input type="checkbox"/>	<input type="checkbox"/>	إذا كانت الإجابة بـ نعم ، يرجى تزويدنا بـ : <ul style="list-style-type: none"> • مصدر البرنامج و عقد الاتفاقية مع المزود. • وفي حال لدى البلدية برامجها الذاتية ، يرجى تزويدنا بدليل ارشادي يوضح محتوى البرنامج وآلية عمله.
28	هل يوجد لديكم خطة صيانة وتشغيل للطرق والمباني العامة وفق متطلبات دليل الصيانة والتشغيل	<input type="checkbox"/>	<input type="checkbox"/>	<input type="checkbox"/>	إذا كانت الإجابة نعم يرجى تزويدنا بنسخة عن التقارير الصادرة من النظام المحوسب المطبق لديكم والتي تتضمن ما يلي: - تقرير خطة الصيانة للطرق والمباني العامة للأعوام 2020 أو 2021 و 2022. - التقرير الفعلي لصيانة الطرق والمباني العامة لعام 2022

*** مؤشرات عامة حول الشفافية والمشاركة المجتمعية					
الرقم	السؤال	الإجابة		إذا كانت الإجابة نعم، كيف تم ذلك؟؟؟	الوثائق الداعمة
		نعم	لا		
29	هل تم نشر موازنة البلدية وإعلام المواطنين بها لعام 2022؟	<input type="checkbox"/>	<input type="checkbox"/>	يرجى إرفاق ما يثبت ذلك.
30	هل يتم الإفصاح العام عن الميزانية المنفذة من قبل البلدية لعام 2022؟	<input type="checkbox"/>	<input type="checkbox"/>	يرجى إرفاق ما يثبت ذلك.

يرجى إرفاق ما يثبت ذلك	<input type="checkbox"/>	<input type="checkbox"/>	هل تم الإفصاح عن الموازنة السنوية من خلال نموذج صيغة الموازنة المقروءة؟	31
يرجى إرفاق ما يثبت ذلك.	<input type="checkbox"/>	<input type="checkbox"/>	إذا كانت الإجابة عن السؤال 29 و 30 بنعم، هل تم عقد لقاء مجتمعي لعرض البيانات المالية والحصول على تغذية راجعة من المجتمع المحلي؟	32
يرجى إرفاق ما يثبت ذلك.	<input type="checkbox"/>	<input type="checkbox"/>	هل قامت البلدية بإعلام المواطنين وتوعيتهم بالتصنيف السابق الذي حصلت عليه البلدية حسب مؤشرات الأداء المعتمدة لدى الصندوق؟	33
يرجى إرفاق ما يثبت ذلك.	<input type="checkbox"/>	<input type="checkbox"/>	إذا كان لدى البلدية خطة تنموية إستراتيجية، هل تم نشرها أو تم إعلام المواطنين بفحواها؟	34
يرجى إرفاق ما يثبت ذلك.	<input type="checkbox"/>	<input type="checkbox"/>	إذا كان لدى البلدية خطة تنموية إستراتيجية وتم تنفيذ مشاريع ضمن الخطة، هل تم إعلام المواطنين بما تم إنجازه من الخطة بشكل دوري؟؟	35
يرجى إرفاق ما يثبت ذلك.	<input type="checkbox"/>	<input type="checkbox"/>	إذا كان لدى البلدية تقرير مدقق حسابات خارجي، هل تم نشر التقرير من خلال وسائل متاحة مثل الموقع الإلكتروني للبلدية وإعلام المواطنين بذلك؟	36
يرجى إرفاق ما يثبت ذلك	<input type="checkbox"/>	<input type="checkbox"/>	هل يتم تخصيص جزء من موارد وموازنة البلدية لوضع خطة للمساءلة المجتمعية؟	37
يرجى إرفاق ما يثبت ذلك مع توضيح الأدوات التي تم استخدامها.	<input type="checkbox"/>	<input type="checkbox"/>	وهل تم تنفيذ أدوات المساءلة المجتمعية المرفقة بالخطة؟	38

يرجى إرفاق ما يثبت ذلك.	<input type="checkbox"/>	<input type="checkbox"/>	هل يتم اصدار تقارير تعكس تنفيذ أدوات المساءلة المجتمعية	39
-------------------------	----------------------------------	--------------------------	--------------------------	---	----

*** مؤشرات حول مركز خدمات الجمهور

الوثائق الداعمة	الإجابة			السؤال	الرقم
	قيد التنفيذ	لا	نعم		
إذا كانت الإجابة بنعم ، يرجى تزويدنا ب : مصدر البرنامج وعقد الاتفاقية مع المزود. وفي حال لدى البلدية برامجها الذاتية ، يرجى تزويدنا بدليل ارشادي يوضح محتوى البرنامج وآلية عمله.				هل تمتلك البلدية منظومة محوسبة لإدارة وتشغيل مركز خدمات جمهور؟	40
كم عدد الخدمات التي تم تعريفها على النظام المحوسب لتنفيذ من خلاله؟	<input type="checkbox"/>	<input type="checkbox"/>	<input type="checkbox"/>	كم عدد الخدمات التي تعالجها البلدية من خلال النظام المحوسب لمركز خدمات الجمهور؟	41
الرجاء إرفاق تقرير صادر من النظام المحوسب بعدد الخدمات المقدمة والمنجزة والمرفوضة والعالقة ومصنفة حسب الخدمة وذلك للعامين 2021 و 2022	<input type="checkbox"/>	<input type="checkbox"/>	<input type="checkbox"/>	هل تمتلك البلدية نظام محوسب (بلدية إلكترونية) لتقديم الخدمات؟	42

*** مؤشرات حول نظام الشكاوي

	الإجابة		السؤال	الرقم
	لا	نعم		
إذا كانت الإجابة نعم، هل النظام: محوسب يدوي	<input type="checkbox"/>	<input type="checkbox"/>	هل يوجد نظام شكاوي لدى البلدية؟	43
إذا كانت الإجابة نعم، يرجى إرفاق ما يثبت ذلك	<input type="checkbox"/>	<input type="checkbox"/>	إذا كان هناك نظام شكاوي لدى البلدية (سواء يدوي أو محوسب)، فهل تم تعميمه وإطلاع المواطنين على الإجراءات المتبعة للشكاوي؟	44
إذا كانت الإجابة نعم، يرجى تزويدنا بما يثبت فعالية نظام الشكاوي في البلدية : (تقارير تتعلق بالشكاوي)	<input type="checkbox"/>	<input type="checkbox"/>	إذا كان هناك نظام شكاوي لدى البلدية هل النظام فعال	45

واصدار نتائجها. (المطلوب تقرير وفق البرنامج المحوسب)				
ارفاق تقرير يعكس احصائيات الشكاوي في مركز خدمات الجمهور مع وجود دليل الردود على الشكاوي.				

*** مؤشرات حول دعم المناطق المهمشة ، والفئات المهمشة (النساء، الشباب كبار السن واصحاب الاعاقات)				
هل يوجد لدى البلدية مؤشرات واضحة لتعريف وتصنيف المناطق المهمشة وهل يوجد لديها معلومات وتقارير حول المناطق المهمشة في مناطق نفوذها	<input type="checkbox"/>	<input type="checkbox"/>	46	اذا كانت الاجابة نعم يجب ارفاق تقارير توضح المؤشرات
هل تم تخصيص مشاريع ضمن الأولويات التنموية الاستراتيجية (السابقة) للبلدية لخدمة الفئات بما فيها: ذوي الاحتياجات الخاصة، كبار السن، النساء والفتيات والشباب الأطفال	<input type="checkbox"/>	<input type="checkbox"/>	47	في حال كانت الإجابة نعم كم بلغت قيمة المشاريع النسبة المئوية من إجمالي قيمة مشاريع الخطة التنموية الإستراتيجية..... كم بلغ عدد المشاريع النسبة المئوية من إجمالي عدد مشاريع الخطة التنموية الإستراتيجية يرجى إرفاق القائمة الكلية لمشاريع الخطة التنموية الإستراتيجية وتحديد المشاريع التي استهدفت تلك الفئات.
هل تم تخصيص مشاريع ضمن الأولويات التنموية الاستراتيجية (السابقة) للبلدية لخدمة المناطق المهمشة.	<input type="checkbox"/>	<input type="checkbox"/>	48	في حال كانت الإجابة نعم ماهي الإعتبارات التي اعتمدها البلدية في تصنيف تلك المناطق كم بلغت قيمة المشاريع النسبة المئوية من إجمالي قيمة مشاريع الخطة التنموية الإستراتيجية..... كم بلغ عدد المشاريع النسبة المئوية من إجمالي عدد مشاريع الخطة التنموية الإستراتيجية يرجى إرفاق القائمة الكلية لمشاريع الخطة التنموية الإستراتيجية وتحديد المشاريع التي استهدفت تلك المناطق.
هل تقوم البلدية بنشر تقارير حول احتياجات المناطق المهمشة	<input type="checkbox"/>	<input type="checkbox"/>	49	يرجى ارفاق ما ثبت ذلك

			ومشاركتها مع المواطنين	
يرجى ارفاق وصف للمشاريع ، واماكن تنفيذها وموازنتها ووصف المستفيدين منها	<input type="checkbox"/>	<input type="checkbox"/>	هل نفذت البلدية اي من المشاريع خلال العام الماضي لدعم المناطق المهمشة او الفئات المهمشة	50
يجب ارفاق نسخة عن خطة المواءمة، وكيف تقوم البلدية بتنفيذ الخطة	<input type="checkbox"/>	<input type="checkbox"/>	هل تمتلك البلدية خطة لمواءمة المرافق العامة والطرق ، وهل تخصص البلدية جزء من موازنتها السنوية لدعم أنشطة المواءمة	51
يجب ارفاق معلومات وتقارير لتوضيح مشاركة الفئات المهمشة في أنشطة البلدية ، تقارير سنوية حول مشاركة النساء والشباب ، قرارات توجيهية للبلدية للالتزام بمشاركة النساء والشباب والفئات المهمشة في أنشطتها	<input type="checkbox"/>	<input type="checkbox"/>	هل تلتزم البلدية بمشاركة 30% من الفئات المهمشة (النساء والشباب واصحاب الاعاقات وكبار السن) في أنشطتها	52

*** مؤشرات حول المناطق الخضراء				
اذا كانت الاجابة نعم كم بلغت مساحة ما تم تنفيذهمتر مربع	<input type="checkbox"/>	<input type="checkbox"/>	هل تم تنفيذ مشاريع لإنشاء حدائق عامة خلال السنتين الماضيتين: 2021 و 2022	53

ANNEX B: Scope of Work for Municipal Ranking Assessment

The firm is requested to review and verify the supporting documents received from the municipalities, conduct an onsite inspection of all municipalities, document the results including any discrepancies or issues identified, and then **determine baseline values for 19 suggested KPIs for MDP 4 ranking system.**

To meet the objectives of the assignment, the scope of work is described as follows:

- **Review of secondary material⁵:** This includes the MDP3 Project Appraisal Document (PAD); The MDP3 Grant Allocation Manual (GAM), Strategic Development & Investment Planning (SDIP) Manual and Toolkit, Fixed Assets Registration and Valuation Methodology, Financial Policies and Procedures Manual “FPPM” for Cash-Based and Accrual Based Accounting, Operation and Maintenance guiding principles, as well as the minimum standards for auditing reports, and the available documents for the proposed MDP4.
- **Review the ranking systems MDP4,** which include 19 key performance indicators (KPIs) respectively. It is important that the consulting team familiarize themselves with the criteria and verification protocol for KPIs 19. This will assist the consulting team in understanding the ranking system and ensuring that all evaluation processes are conducted accurately.
- **Review and verifying the** supporting documents provided by 159 municipalities (134 in the West Bank and 25 in Gaza) to ensure that they adhere to the minimum standards set by the MDLF using the agreed-upon verification protocol for key performance indicators. This process will require analyzing the documents and comparing them with the methodologies and manuals adopted by the MDLF.
- **Analyze, and verify the supporting documents⁶** received from 159 municipalities (134 WB, 25 Gaza) to verify the compliance of these documents with the minimum standards in accordance with the specified methodologies and manuals adopted by MDLF and based on the agreed-upon verification protocol for KPIs.
- **Conduct a field survey at the municipal level (all municipalities) (expected up to “80”⁷ field visits⁸)** for further verification to double-check compliance with KPIs. The auditing will be mainly based on the office work and the analysis of the supporting documents received from the municipalities; however, field visits will be conducted to verify the collected data by meeting the relevant municipal staff to check the data quality. During these visits, the relevant municipal staff will be met in order to check the quality of the data. This will allow for a more thorough and comprehensive assessment of each municipality's compliance with the KPIs.
- **Conduct the analysis of the municipalities’ budgets concerning the financial KPIs (revenues collection, operational surplus, and other relevant metrics....etc).**
- Based on the findings from the data analysis and verification, the firm shall update the MDP4-municipal ranking based on 19 KPIs. This shall include an explanation and

⁵ All the mentioned methodologies and manuals are published on MDLF website: www.mdlf.org.ps

⁶ MDLF is currently working on conducting a survey at the municipal level, where the municipalities will be asked to fill out a questionnaire including the KPIs for both ranking systems and asking them to submit the supporting documents as well.

⁷ The field visits' schedule should be discussed jointly with MDLF and approved based on the results of the desk review.

⁸ Each field visit refers to "an area or group/cluster of nearby municipalities".

justification for each municipality's rank along with a comparison to the baseline figures FY 2019.

- The firm shall assist MDLF in reviewing and verifying the complaints from the municipalities on their ranks. And, provide appropriate responses to each complaint.

Special note:

The source of data for this assignment will be as follows:

- The municipalities' data will be collected by MDLF using the web application survey with all supporting documents.
- The MOLG data in relation to the submitted municipalities' budget.
- The MOLG guidelines, toolkits in relation to the planning, financial policy reform, and SA toolkits.
- The MOF for net lending figures per municipality.
- The PCBS database which has been updated for the benefit of MDLF/MDP.